

# *C.F.O. Journal*

The Colorado Field Ornithologists' Quarterly



Volume 14, Number 2

Spring 1980



### **C.F.O. JOURNAL**

Published 4 times a year by the Colorado Field Ornithologists, c/o Camille Cummings, 1924 N. County Rd. 17, Berthoud, CO 80513. Controlled Circulation postage paid at Berthoud, Colorado.

### **OFFICERS OF THE COLORADO FIELD ORNITHOLOGISTS**

*President:* David Alles, 1520 Belmont, Longmont, CO 80501. *Vice President:* Timms Fowler, 2924 Marilyn Rd., Colorado Springs, CO 80909. *Executive Secretary:* Camille Cummings, PO Box 109, Berthoud, CO 80513; *Treasurer:* Judd Sundine, 5325 Garland, Arvada, CO 80002; *Directors:* Peggy Abbott, Fort Collins; Walter D. Graul, Northglenn; Ron Harden, Loveland; Ronald A. Ryder, Fort Collins; Betsy Webb, Boulder.

### **CFO OFFICIAL RECORDS COMMITTEE**

Charles Chase (chairman), Boulder; Robert Andrews, Denver; Dave Griffiths, Pueblo; Edward Hallowed, Meeker; Harold Holt, Denver; Tim Manolis, Boulder; Peter Moulton, Longmont; Ronald Ryder, Fort Collins; Richard Stransky, Durango.

### **CFO JOURNAL STAFF**

*Co-Editors:* Peter Gent, 55 South 35th Street, Boulder, CO 80303; Terry Root, EPO Biology, Univ. of Colo., Boulder, CO 80309. *Editorial Assts.:* Chip Blake, Jeanne Conry, Barry Knapp, Pat Wheat.

CFO JOURNAL is a quarterly publication devoted to the field study of birds in Colorado. Articles and notes of scientific or general interest, and reports of unusual observations, are solicited. Send manuscripts, with photos and drawings to: Peter Gent, 55 South 35th Street, Boulder, CO 80303. Send rare bird reports to: CFO Official Records Committee, c/o Zoological Collections, Denver Museum of Natural History, City Park, Denver, CO 80205.

**ANNUAL MEMBERSHIP DUES** (renewable at the beginning of each year), including a subscription to CFO JOURNAL: Sustaining, \$100; Supporting, \$25; Contributing, \$10; Regular, \$5. Dues and contributions are tax-deductible to the extent allowed by law. Membership inquiries and renewals should be addressed to Judd Sundine, Treasurer, 5325 Garland, Arvada, CO 80002. Send change of address to Camille Cummings, PO Box 109, Berthoud, CO 80513.

## TABLE OF CONTENTS

	PAGE
From the Editors . . . . .	26
Summer Occurrence of a Yellow-Throated Vireo in Colorado Courtney Buechert . . . . .	27
Spring Migration 1979 Chip Blake . . . . .	29
Grace's Warbler nesting on Colorado's Eastern Slope Dave A. & Carolyn Griffiths, Mel Hull & David Silverman .	37
Summer Report 1980 Charles A. Chase III . . . . .	38
Site guide to Bonny Reservoir Michael P. Moulton, Peter J. Moulton and Judd Sundine . .	53

Cover Photograph: White tailed Ptarmigan on Guanella Pass, by Bill Ervin. Bill is a graduate student in the Department of EPO Biology at the University of Colorado in Boulder. Another photograph he took at the same time won an honorable mention in American Birds.

## FROM THE EDITORS

The CFO Journal now has new Co-editors. We think Bruce Webb and Barry Knapp have done a great job over the last two years, and we intend to keep up the high standard they have set. We need your help to keep the Journal going. Please submit articles on Colorado ornithology, site guides to good birding spots around the state, photographs and drawings. We also need volunteers to write the seasonal reports.

This issue contains two seasonal reports written in different formats. The first, for Spring 1979 by Chip Blake, is in the traditional style of a summary followed by a commentary which includes only interesting and unusual sightings. The second, for Summer 1979 by Charles Chase, has short summaries followed by tables which list most of the sightings reported. The second style means a longer report, but is more complete. Please let us know which format you prefer, or if you have any other formats to suggest; just a list of Latilong updates for example.

PETER GENT and TERRY ROOT

\*\*\*\*\*

## AOU ANNUAL MEETING

The American Ornithologists' Union will hold its annual meeting at Colorado State University, Fort Collins, Colorado, August 11-15, 1980. An interesting program of scientific papers, lectures, exhibits, and tours is planned. The public is invited. For information about the local arrangements write Dr. Gustav A. Swanson, Department of Fishery and Wildlife Biology, Colorado State University, Fort Collins, Colorado, 80523. For information about the program of papers, write Dr. Kendall Corbin, Secretary, American Ornithologists' Union, Bell Museum of Natural History, University of Minnesota, Minneapolis, Minnesota, 55455.

## SUMMER OCCURRENCE OF A YELLOW-THROATED VIREO IN COLORADO

by

Courtney Buechert, 145 Porto Marino Drive  
Tiburon, California 94920

At 7:00 am on July 3, 1979, Phil Schaeffer, Todd Olson and I sighted a Yellow-throated Vireo (Vireo flavifrons) in the western edge of the Crow Valley Park, Pawnee National Grasslands, Weld County, Colorado.

The bird was first seen when it flew into the cottonwoods above our campsite. It was immediately noted to be smaller than nearby Orchard Orioles (Icterus spurius), being closer to Wood Warbler size. We "lost" the bird temporarily, after it landed about twenty feet up in the trees. The Vireo was relocated by its distinctively methodical, deliberate leaf-gleaning and flycatching. We followed the bird for approximately four minutes, as it moved between four or five trees, before finally losing track of it. Several later attempts to re-locate the bird that morning were not successful.

The Vireo was identified almost immediately by two of us, (CB, PS) and during the observation the following field marks were noted:

Approximately 5 1/4 inches length. Heavy bodied and bull-headed in appearance. Typically, the bird had a heavy, black Vireo bill. The iris was dark brown, and the pupil was black. The cap, nape, auriculars and upper back were olive-green. The eyering, lores, throat, and breast were a bright lemon-yellow. The wings were a dark gray-black, with 2 white wing-bars and the tertials were margined with white. The rump and lower back were gray. The lower belly, flanks, and undertail were whitish. The rectrices were a dark gray-black, finely edged paler, appearing proportionately short and thick (broad). It moved without the nervous flightiness of a wood warbler.

On July 6, 1979 we returned to Crow Valley Park. While birding alone at about 5:30 am, I re-found the vireo in another group of cottonwoods in the center of the Park above several picnic benches.

The same deliberate foraging pattern aided in finding the bird about twenty-five feet up in the trees. This time, near to the Vireo was a male Yellow Warbler (Dendroica petechia) for direct comparison. Since the sun was just coming up, the lighting was quite poor, and the most decided differences noted were the Vireo's contrasting wingbars (light on dark), compared to the lack of such on the Warbler. Also, readily evident was the difference in bill and body shape, both being much slimmer, and more streamlined in the Warbler. Both birds flew to the western area of the park after about six minutes.

The following are two species that, under some circumstances, could be confused with a Yellow-throated Vireo:

Solitary Vireo (*Vireo solitarius*):

Some races of this Vireo can have extensive yellow-green on the back and flanks, yet even these have white "spectacles" and throat, plus a gray or blue-gray crown, unlike the Yellow-throated Vireo's olive green crown.

Pine Warbler (*Dendroica pinus*):

The Pine Warbler is generally similar to a Yellow-throated Vireo in color and color patterns, yet the absence of prominent yellow "spectacles", the slimmer bill and build, the conspicuous white spots in the rectrices and its more active, flighty feeding behavior, all eliminate this species.

Comparing our description with descriptions taken from specimens (Chapman 1923; T. Gilbert Pearson 1917), we concluded that the bird was in fresh adult plumage.

The latest date of departure of Yellow-throated Vireo from eastern Colorado known to us is May 22, 1968 (Lane and Holt 1979). Thus, we were very surprised seeing this bird 42 days after that extreme date, compounded by the rarity of the Vireo in its expected migration period and the lack of any mention of a record on the Pawnee Grassland checklist.

BIBLIOGRAPHY

- Chapman, Frank M., Birds of Eastern North America, D. Appleton & Co., New York & London, 1895, 1912, p. 427.
- Lane, James A., and Holt, H. A Birder's Guide to Eastern Colorado, 1973, revised 1975, 1979, L & P Press.
- Pearson, Gilbert T., et al, Birds of America, Doubleday & Co., New York, 1917, 1936, pp. 105-106, 211.
- Pough, Richard H., Audubon Land Bird Guide, Doubleday & Co., New York, 1946, 1949, plates 20, 30; p. 139-140, 176.

## SPRING MIGRATION, MARCH 1 - MAY 31, 1979

by

Chip Blake, 1105 11th St., Boulder, Colorado 80302

Cool, wet weather characterized the spring of 1979, resulting in a slow, rather uneventful migration. Observers commented on the low numbers and lack of species. Many passerine species appeared up to two weeks late. The very wet weather overfilled lakes and reservoirs and virtually every species of shorebird made a poor showing as a result. Waterfowl, including grebes, also were below average in numbers.

Observers reported 329 species, about average for spring migration (330 last spring and 339 in 1977). The low numbers of an alarming number of species may be a result of the sluggish weather which retarded the arrival of many migratory birds.

Several outstanding birds included Spotted Owl, Vermilion Flycatcher, three Hermit Warblers and a Painted Bunting. The Cattle Egret continued to increase throughout the state. Blue-gray Gnatcatchers were reported in higher than usual numbers. No Hammonds' Flycatchers and just seven Plain Titmice were reported. Observations of the Peregrine Falcon equalled those of the much commoner Prairie Falcon; this probably illustrates the need for observers to notice and report on our resident species as well as rarities.

It is very important for observers to continue reporting subspecies formed by "lumpings". These include Audubon's/Myrtle's Warbler, Bullock's/Baltimore Oriole, Yellow/Red-shafted Flicker and Slate-colored/White-winged/Oregon Junco. Since these are all easily identifiable forms, they should be reported. Observers should also try to report on obvious sub-species of other species, especially Hairy and Downy Woodpeckers, Fox and White-crowned Sparrows. Journals such as ours are infinitely valuable collections of ornithological information, and we should try to build up as much data as possible.

The dates for the frequently-mentioned Spring Bird Counts are as follows: Colorado Springs, Denver, Foothills Audubon Club and Rocky Mountain National Park-May 12; Durango and Fort Collins-May 19.

LOONS THROUGH IBISES: Common Loon-a good flight, 44 individuals reported, 27 of these on the Denver SBC. Late bird at Lake Henry, Crowley Co., 5/17 (CCh). . . Arctic Loon-probable sighting at Pueblo Reservoir during last week of May for an unusual spring report (DAG). . . Horned Grebe-late count of 9 on the FAC SBC. . . Eared Grebe-low numbers throughout the state, high of 43 on the Colorado Springs SBC (239 on same count 1978). Earliest-4/1 in Pueblo (DAG). . . Pied-billed Grebe-arrived Pueblo 3/16 (DAG). Just 4 from the west slope and only 3 on the Denver SBC. . . White Pelican-fair numbers from the Ft. Collins area, and 1 reported Grand Junction 5/2-3 (SS). . . Double-crested Cormorant-also a report of 1 in Grand Junction 5/2 (SS). . . Green Heron-average showing, eight observations of 9 individuals, including an unusual west

slope report of 1 in Ridgway 4/7-11 (JRG). . . Great Egret-just 2 reported: Chatfield 4/21-5/5 (F&JJ, HK) and the Colorado Springs SBC. . . Snowy Egret-again, a hard-to-find bird, just 15 on east slope, 19 on west; 17 of these reported from Grand Junction in early May. . . . Cattle Egret-4 observations: 1 MVNWR in late March (MTN), 9 reported from Grand Junction 4/29 (RL), 1 on the FAC SBC and 1 at Sawhill Ponds 5/13 (BAS). . . . Yellow-crowned Night Heron-2 adults of this rare species found at Chatfield 5/19 (F&JJ, HK). . . . American Bittern-five observations of 13 individuals, all but 1 from the Boulder-Ft. Collins area. Manson reported a pair nesting at Sawhill Ponds. . . . White-faced Ibis-82 on the FAC SBC was a good number.

DUCKS AND GEESE: Whistling Swan-1 reported from Chatfield 3/4 (LKM). 1 from Boulder 3/12 (PC,EM) and 5 from Grand Junction 3/18 (RL). . . . Snow Goose-only one report of 19 birds! (10,000 last spring) in Grand Junction 3/6 (RL). Surely more of these were seen. . . . Gadwall-"The commonest dabbling duck of the spring," says Manson. High of 323 on the FAC SBC. . . . Blue-winged Teal-arrival of 4 in McCoy 3/20 (ME). . . . Cinnamon Teal-many observers commented on the scarcity of this species, although it was the most common teal on BMR (Cook). Arrival-1 at Chatfield 3/11 (F&JJ). . . . Northern Shoveler-the main wave passed during the third week of March, 248 on the Denver SBC. . . . Wood Duck-eight observations of this uncommon duck, totaling 19 individuals. Unusual west slope reports of 3-4 in Eagle throughout the spring (JM) and 2 in Grand Junction 5/2 (SS). . . . Redhead-5000 in Boulder 3/4 and 3000 in Longmont 4/1 (PM). . . . Ring-necked Duck-only nine reports, high count of 750 in Boulder 3/25 (MM). . . . Greater Scaup-1 in Boulder 5/6 (BAS). . . . Common Goldeneye-14 on the FAC SBC was a large number for so late a date. . . . Barrow's Goldeneye-1 reported from Eagle 3/3 (JM) and 10-15 a day from the Grand Lake area until 4/8 (DAJ). . . . Hooded Merganser-five observations of 22 individuals, including a very late sighting of 11 at Chatfield 5/27 (F&JJ). . . . Common Merganser-five reports totaling 141 birds 3/21-4/21. 106 reported from Boulder 3/16-31.

HAWKS AND FALCONS: Mississippi Kite-a large group counted 22 individuals along the lower Arkansas and in Lamar 5/27 (CCh, JC, BE, PG, MH, MMo, PM, TR, BW). . . . Goshawk-seven observations of about 11 individuals, 3 of these on the RMNP SBC. . . . Sharp-shinned Hawk-a very good spring for this species, with about 45 individuals reported, all but 5 from the east slope. . . . Cooper's Hawk-ten reports for 17 individuals, about average. . . . Broad-winged Hawk-an average flight, seven reports of single birds, all but one from the Denver-Boulder-Fort Collins area. . . . Swainson's Hawk-twelve reports totaling about 72 individuals, with one western report, 3 at Eagle 5/5-6 (JM). 2100+ Swainson's were seen during a 40 minute period near the Sheridan, Wyoming airport 4/24 (CC). Rough-legged Hawk-a very late bird on the Colorado Springs SBC. Just 12 individuals reported. . . . Ferruginous Hawk-13 individuals total which seems low. Earliest 4/22 at Trinidad (MM). . . . Golden Eagle-eleven reports for about 29 individuals from the east slope, five for 13 from the west. . . . Bald Eagle-at least 152 reported, 134+ of these on a trip along the Platte River from Greeley to Ft. Morgan 3/1 (JF). . . . Northern Harrier-many observers noted sub-normal numbers of this usually common species, with only 51 individuals reported. . . . Osprey-seven reports totaling 11 birds 4/7-5/22. Also, Jasper reported that 5 pairs



were in the Grand Lake area throughout the spring and nested there. . . Prairie Falcon-just seven reports for 21 individuals, 18 of these from the east slope. . . Peregrine Falcon-reports of this species equalled those of the previous one. Reports of single birds from: Pueblo 4/24 (VT), Garden of the Gods (WWB), Grand Junction in late April (EMu), Boulder 5/5 (PW), Estes Park 5/9 (WR), Pueblo 5/11 (VT) and the FAC SBC. . . Merlin-only Boulder reports with 4 seen there between April and 5/8. . . American Kestrel-very good numbers for this species.

GROUSE THROUGH RAILS: Blue Grouse-six reports of single birds, seems low. . . White-tailed Ptarmigan-8-10 on Berthoud Pass throughout the spring (DAJ). . . Greater Prairie Chicken-1 at Bonny 5/4 (CB). . . Lesser Prairie Chicken-9 displaying males at Campo 4/22 (MM). . . Sharp-tailed Grouse-78 strutting males in Meeker 4/14 (JW) and 1 at Ridgway 5/6 (JRG). . . Scaled Quail-4 in Campo 4/22 (MM) and 2 in Colorado Springs 4/24 (CC). . . Turkey-four observations for about 10 individuals. One wonders how many of these birds are introduced. . . Bobwhite-a single report of 4 at Tamarack Ranch 5/8 (PM). . . Whooping Crane-one bird east of Fountain 3/12 (CC), 9 at MVNWR 3/15-4/13 (MTN) and an undated report from Gunnison (KC). Perhaps observers could start reporting band sequences of Whooping Cranes so they could be identified as Gray's Lake or Aransas birds. . . Sandhill Crane-46 reported from Boulder 4/6 (JC), 15 from Meeker 4/9-10 (JW) and about 25 from Colorado Springs (fide CC) 5/23. . . Virginia Rail-nine reports for about 19 individuals 4/19-5/25. . . Sora-nine reports totaling about 46 birds 4/27-5/25.

SHOREBIRDS AND GULLS: Semipalmated Plover-57 individuals reported, compared to 248 last spring. 49 of these from the east slope, the other 8 in Gunnison 5/24 (KC). . . Piping Plover-only 1 reported-CF&I Lakes 4/22 (DAG). . . Snowy Plover-arrival starting in Pueblo 4/13, high of 30+ by mid-May; only other report-12 from Adobe Creek Reservoir 5/27 (v.o.). . . Mountain Plover-seven reports 3/14-5/27. Truan reports them doing well in Pueblo. . . Black-bellied Plover-incredibly, there were only two reports: 1 at Bonny 5/5 (CB,BW) and 25 on the FAC SBC. . . Long-billed Curlew-six reports, all from the east slope for about 12 individuals 4/24-5/27. . . Whimbrel-3 in Pueblo 5/12 (DAG) and an unusual west slope report of 1 at Pastorius Reservoir near Durango 4/26 (EF). . . Upland Plover-four reports for about 6 individuals 5/4-22, all from the east slope. . . Spotted Sandpiper-earliest 4/28 in Meeker (JW) and Durango (EF). . . Red Knot-a single report of 1 in Durango 5/11 (EF) and 1 from Red Lion 5/27-29 (WWB). . . Baird's Sandpiper-six reports totaling about 152 birds, all but 20 from the Denver-Boulder-Ft. Collins area, and all from the east slope 4/7-5/12. . . Stilt Sandpiper-the only report came from FAC the day before their SBC. . . Marbled Godwit-at least 269 reported 4/15-5/16. . . Sanderling-an unusual report of 7 on the Durango SBC. . . Black-necked Stilt-six reports for about 18 individuals 4/15-5/28. . . Red Phalarope-1 from Meeker 4/27 (MGe). . . Wilson's Phalarope-3500 counted at Pueblo 5/12 (HS) and 1426 on the Colorado Springs SBC the same day. . . Northern Phalarope-five reports totaling 63 individuals, 50 of these at North Park 5/12-13 (FCAS) and 8 in Eagle in late April (JM). . . Glaucous x Herring Gull-1 at Union Reservoir 4/1, described as being a very faded first-winter bird typical of a pure Glaucous except for a pale wingtip pattern (PG,

PM). . . Laughing Gull-3 of this rare species found among Franklin's at CF&I Lakes 5/31 (VT). . . Bonaparte's Gull-just three reports: 2 at Clover Basin 4/17 (PM), 1 at Chatfield (F&JJ) and 1 in the Grand Lake area 5/8 (DAJ). . . Foster's Tern-160 reported, 157 of these from the east slope. . . Common Tern-1 at Bonny 5/12 for the only report (PM). . . Black Tern-131 reported 5/12-5/27, including 50 at Julesburg 5/18 (PM).

CUCKOOS THROUGH WOODPECKERS: Yellow-billed Cuckoo-two reports from Boulder: 2 acting as a pair 5/18 (PM), and 1 at a feeder 5/30-31 (PC). . . Black-billed Cuckoo-P. Moulton heard one in Ovid 5/18. . . Barn Owl-five reports: 1 at Jackson Reservoir 3/11 (CB), 1 at Two Buttes Reservoir 4/21 (MM), 1 at Hanna Ranch 5/13 (PA), 1 at Bonny 5/13 (CB), and 7 from the Pueblo area throughout the spring (VT). . . Screech Owl-10 individuals reported, not including a young bird that interrupted the C.U. graduation ceremonies 5/26. . . Great Horned Owl-84 reported from the east slope, 20 from the west. . . Pygmy Owl-just one report, from Longmont 4/13 (MG). . . Burrowing Owl-one unusual undated west slope report from Gunnison (KC). . . Spotted Owl-B. Webb found 2 in Mesa Verde National Park 5/19. . . Long-eared Owl-very low numbers of this owl: 5 in Pueblo 4/5-7 (DAG, VT) and 2 in Longmont (DE). . . Short-eared Owl-two reports from the plains: 4/12 (DAG) and 5/11 (CB, PG, TR). . . Saw-whet Owl-1 seen in Skyway 3/3 and 4/25, presumably the same bird (CC). . . Flammulated Owl-5 found freezing near Aspen 5/7 (2 died, other 3 released). . . Common Poor-will-1 reported from Pueblo 4/13 (VT), 1 from Glenwood Springs 5/10 (JM), and 2 at Bonny 5/12-13 (CB, PG, PM, TR). . . Common Nighthawk-"a few in Eagle on 4/24; only other reports came from the southeastern quarter of the state. . . Black-chinned Hummingbird-arrival in Pueblo 4/29 (DAG); all other reports from west slope. . . Broad-tailed Hummingbird-23 reports totalling about 222 individuals 4/15 and on. . . Rufous Hummingbird-the only report was "several" in Grand Junction 5/7 (DG) and the Colorado Springs SBC. . . Rivoli's Hummingbird-one report from BMR 5/22 (CO). . . Common Flicker-just 3 Yellow-shafted and 2 crosses reported. . . Red-bellied Woodpecker-1 in Colorado Springs 4/27 (EW). . . Red-headed Woodpecker-A good spring for this bird, with about 35 individuals reported. . . Lewis' Woodpecker-33 from the east slope and 34 from the west, 29 of the latter on the Durango SBC. . . Northern Three-toed Woodpecker-1 reported from Durango 5/5 (EF) and 1 from Ft. Collins 5/19 (FCAS). None reported in Boulder, the usual stronghold.

FLYCATCHERS THROUGH CORVIDS: Eastern Kingbird-1 rather far west on the Durango SBC. . . Western Kingbird-Rigli found a bird in his yard in Ft. Morgan 3/31, an amazingly early date. Westerns outnumbered Easterns 3 to 1 on both slopes. . . Cassin's Kingbird-2 on the FAC SBC. . . Scissor-tailed Flycatcher-3 reports: 1 from Limon 5/17-18 (SB), 1 from Chatfield 5/19 (AB), and 1 from Eagle 5/19 (JM). . . Great Crested Flycatcher-a very obliging individual at Bonny 5/13 for the only sighting (CB, PG, PM, TR). . . Ash-throated Flycatcher-the only non-Durango sighting one in Carrizo Canyon 4/22 (MM). . . Eastern Phoebe-an undated report from Loveland 5/30 (FAC). . . Black Phoebe-one individual of this rare flycatcher at Pueblo Reservoir 5/18 (VT). . . Empidonax sp.-Western most common, followed by Willow, Dusky, Least and Gray. No Hammond's reported! . . . Vermilion Flycatcher-one male at Chatfield

4/15 for one of the most outstanding finds of the season (DFO). . . Olive-sided Flycatcher-just three individuals reported. . . Swallows-Cliff by far the most abundant, followed by Barn, Violet-green, Tree, Rough-winged and Bank. Tree and Rough-winged were the first to appear (4/4) and Cliff and Bank the last (4/22). Gray Jay-single birds on the Ft. Collins and Colorado Springs SBCs. . . Pinon Jay-122 on the east slope, most of these from Big Thompson, and 181 on the west slope.

CHICKADEES THROUGH SHRIKES: Mountain Chickadee-only 8 individuals reported from the west slope. . . Plain Titmouse-just four reports totaling about 7 birds. . . Common Bushtit-two reports: 2 on the Colorado Springs SBC and 12 in Eagle 5/20 (JM). . . Brown Creeper-just nine individuals reported. . . House Wren-earliest at Meeker (JW) and C.U. (MM) 4/21, and two pairs nested on the C.U. campus (MM). PM reports having 30-40 a day at Bonny 5/12-13. . . Winter Wren-1 in the Boulder Mountain Parks 3/17 (BW). . . Bewick's Wren-just three reports totaling 8 individuals: 1 in Meeker 4/22 (JW), 6 in Carrizo Canyon 4/22 (MM), and 1 on the Denver SBC. . . Long-billed Marsh Wren-about 12 individuals reported, all from the east slope, earliest 4/13 at Sawhill Ponds (CB). . . Mockingbird-9 individuals reported, again all from the east slope, earliest 4/22 in Campo (MM). . . Gray Catbird-29 individuals 5/13-30, all but one from the east slope. . . Curve-billed Thrasher-1 in Pueblo 4/19, the only bird reported (DAG). . . Sage Thrasher-both reports from the west slope, from Ridgway (JRG) and Meeker (JW). . . Hermit Thrush-earliest at C.U. 4/29 (MM). 26 on the Colorado Springs SBC was noteworthy. . . Gray-cheeked Thrush-2 on the Denver SBC and a probable individual at Bonny 5/12 (MM, PM). . . All observations of Catharus thrushes were from the east slope with Swainson's by far the most common. . . Eastern Bluebird-the only report was from Ft. Morgan, where 2 were found 3/29 (JR). . . Western Bluebird-three reports from each slope totaling about 39 individuals; seems rather low. . . Blue-gray Gnatcatcher-many comments on the unusually large numbers of this species, with 29 reported from the east slope 4/23-5/12, and at least 14 from the west 4/22-5/31. . . Sprague's Pipit-a detailed report of 1 in RMNP 5/24 (VD). . . Bohemian Waxwing-no west slope reports. About 1100 reported from the east slope 3/1-4/31, which is late. . . Cedar Waxwing-just three reports: 25 at Bonny 5/5 (CB), 40 there the next weekend 5/12-13 (PM) and 1 at Meeker 5/20 (JW). . . Northern Shrike-four reports totaling about 10 birds, as late as 4/25 in RMNP (WR). . . Log-head Shrike-twelve observations of about 76 individuals 4/7-5/19.

VIREOS AND WARBLERS: Bell's Vireo-6 at Tamarack Ranch 5/18 for the lone report (PM). . . Gray Vireo-2 at Temple Canyon 5/11 for the only report of this species (VT). . . Red-eyed Vireo-an unusual report of 1 in Meeker 5/20 (JW). . . Philadelphia Vireo-1 possible bird at C.U. 5/15 (BW). . . Warbling Vireo-32 individuals reported from the east slope, down from 85 a year ago. 27 were on the west slope. 2 pairs nested on the C.U. campus (MM). . . Tennessee Warbler-25 individuals reported 4/17-5/27 a good total. . . Nashville Warbler-an outstanding year, with 27 reported, almost all from the foothills 4/25-5/24. The Colorado Springs SBC had 7. . . Virginia's Warbler-Brockner counted 480+ during a rain at Chatfield 5/20. . . Magnolia Warbler-four reports for 5 individuals, 3 of these at C.U., possibly the same bird 5/15-18. . . Prothonotary Warbler-1 on the FAC SBC, 1 from Hanna Ranch 5/16 (PA) and

1 observed at Lake Hasty 5/22 (CCh). . . Worm-eating Warbler-1 reported from Chatfield 4/27 (MSJ), one from Ft. Morgan 5/16 (JR) and 1 at Hanna Ranch 5/27 (CFO). . . Northern Cape May Warbler-1 in Marshdale 5/17 (WWB), 1 in Evergreen the same day (ECT) and one reported as being at a feeder in Florissant for four days beginning 5/23 (fide MOS). . . Yellow-rumped Warbler-2866 reported, 74% of these Audubon's-type, 15% Myrtle-type, and 11% unspecified. 821 counted on the Colorado Springs SBC, and 490+ at Chatfield 5/20 (WWB) for large numbers. Manson reported that before 5/4 75% of the Yellow-rumped on the C.U. campus were males, after that date 75% were females. It would be interesting if other observers would submit similar statistics. . . Black-throated Blue Warbler-1 at Tamarack Ranch 5/18 (PM) and another was reported from Ft. Morgan 5/23 (JR). . . Townsend's Warbler-7 reported, 4/27-5/24, 6 of these at C.U. . . Black-throated Green Warbler-three reports of this rare warbler: a female in Boulder 4/15 (FH), a male in the Cooper's yard in Lakewood 4/27, and 1 in Canon City 5/11 (VT). . . Blackburnian Warbler-1 reported at C.U. 5/21 (AC fide MM). . . Yellow-throated Warbler-another rare warbler with several observations: 4/7 in Pueblo (fide CC), 5/11 at Eleven Mile Reservoir by a visitor from Florida who even recognized the call note, 5/21 at C.U. (AC fide MM) and one banded in Lykin's Gulch 5/28 (CW). . . Grace's Warbler-1 in Pueblo 5/28 (DAG) and 2 on the Durango SBC for the only reports. . . Chestnut-sided Warbler-four observations, 5/15-30, 2 of these at C.U. . . Bay-breasted Warbler-1 at Hanna Ranch 5/16-20 (PA) and 1 at C.U. 5/17-21 (BA, BE, MH). . . Blackpoll Warbler-20 reported, all from the east slope and most from Boulder. . . Palm Warbler-1 (possibly 2) at Sawhill Ponds 5/1-7 (CB, BE), 1 on the Denver SBC and 1 on the Ft. Collins SBC. . . Ovenbird-1 reported from Loveland 5/3 (FAC), 1 in Ft. Morgan 5/26 (JR) and 1 at Hanna Ranch the same day. . . Northern Waterthrush-seven observations of about 22 individuals 5/11-19, 10 of these on the Colorado Springs SBC. . . Kentucky Warbler-two sightings of this unusual bird: a male at C.U. 5/16 (MM) and a female also at C.U. 5/18 (TM). . . Yellow-breasted Chat-18 birds reported from the east slope, and 3 from Meeker 5/21 (JW). . . Hooded Warbler-three reports: from Pueblo 4/7 (fide CC), Denver 5/12 (BAS-BBC) and C.U. 5/12-13 (no observer noted). . . American Redstart-18 individuals 4/16-5/24, all from the east slope.

BLACKBIRDS AND TANAGERS: Bobolink-1 at Lake Estes 5/14 (T&LM, photos) and 1 at McCall Lake 5/31 (PM). . . Eastern Meadowlark-2 at Red Lion 5/18 (PM) for the only report. . . Yellow-headed Blackbird-arrival in Boulder 4/8 (MM). . . Orchard Oriole-4 separate individuals sighted 5/12-24. . . Northern Oriole-arrival in Durango (EF) and Ridgway (JRG) 5/6. Only 7 Baltimore-type reported, 5 of these from Bonny 5/12 (PM). . . Great-tailed Grackle-three reports of single birds: 5/1 from Pueblo (DAG), 5/19 in Durango (EF) and an undated report from Hartsel (fide CCh). . . Western Tanager-a very good spring for this species with some 440 individuals reported from the east slope, and only about 45 from the west. Brockner reports an incredible instance of 290+ at Chatfield 5/20. . . Scarlet Tanager-1 reported from Chatfield 5/20 (JB), 2 from Ft. Collins 5/16 (FCAS), 1 from Lake Estes 5/21-25 (T&LM, photos) and 1 banded at Lake Hasty 5/20 (CCh). . . Hepatic Tanager-2 reported in Mesa de Mayo 5/24 (CCh). . . Summer Tanager-1 reported from Durango 4/30 (EF), one from Denver 5/12 (BAS-BBC) and one was banded at Lake Hasty 5/19 (CCh).

FINCHES: Cardinal-1 on the Ft. Collins SBC. . . . Rose-breasted Grosbeak-an average spring with thirteen observations of about 24 individuals, 16 of these in Boulder, and a rather westerly sighting of 1 in Grand Junction 5/24 (RL). Observers in the foothills should be on the lookout for Rose-breasted/Black-headed hybrids since they are as likely to be there as any other spot in the United States. . . . Blue Grosbeak-very scarce this spring, 2 on the Durango SBC and 1 in Pueblo 5/30 (DAG) being the only sightings. . . . Indigo Bunting-well represented in eastern Colorado, with ten observations for about 13 individuals, including a male in Grand Junction 4/13-14 (MF). . . . Indigo x Lazuli Bunting-one hybrid seen at Hanna Ranch 5/27 (PA). As with the Grosbeaks, eastern Colorado is the most likely place in the United States for this hybrid to occur and it should be watched for. . . . Painted Bunting-an adult male was captured in Chase's mist nests 5/22 at Lake Hasty and collected for the second Colorado specimen. . . . Cassin's Finch-with the exception of Grand Junction, rather low numbers from throughout the state. . . . Pine Grosbeak-a dead immature found in McCoy 4/24 (ME), 1 in Glen Eyrie 5/12 (J&RW) and 1 on the Colorado Springs SBC. . . . Gray-crowned Rosy Finch-an unspecified number at Lake Granby 5/30 (DAJ) was the only observation. . . . Black Rosy Finch-1 on the RMNP SBC for only report. . . . Brown-capped Rosy Finch-470 on the RMNP SBC and 1000's in the Grand Lake region throughout the spring (DAJ). . . . Common Redpoll-only one report of 5 in Boulder 3/21 (BAS). . . . Pine Siskin-very common on the east slope, but just three reports from the west slope which seems low. . . . Lesser Goldfinch-20 individuals from the east slope and just five from the west. Surely these numbers are misleading. . . . Red Crossbill-just four reports totaling about 90 birds, 75 of them from the Boulder area. . . . White-winged Crossbill-one report of 2 in Alma 5/7 (CC). . . . Green-tailed Towhee-about 139 individuals reported, including an early report of 1 at Chatfield 3/11 (F&JJ). . . . Brown Towhee-1 in Glen Eyrie 5/12 (J&RW) and 2 on the Colorado Springs SBC the same day. . . . Lark Bunting-abundant on the plains after 5/6, none reported from the west slope. . . . Grasshopper Sparrow-very scarce, the only sightings being 2 on the Denver SBC and 3 in Alamosa 5/10 (WWB). . . . Cassin's Sparrow-scarce again this spring, the only reports being 1 near Limon and 2-3 at the John Martin Dam 5/27 (v.o). The apparent rareness of this species and others, like the Eastern Bluebird, is probably misleading since so little bird-watching is done on the eastern and south-eastern plains. . . . Sage Sparrow-arrival in Durango 3/27 (EF). . . . Dark-eyed Junco-several late reports, although most seem to have left by the first of May. 47% of the Dark-eyed reported were of the Oregon type, 9% Slate-colored type, and 44% unspecified. Just 1 White-winged reported. Observers should still report these ex-species separately. . . . Tree Sparrow-late reports of 1 on the Colorado Springs SBC and 2 on the FAC SBC. . . . Chipping Sparrow-arrival in Durango 4/15 (EF) and Boulder (MM). 865 counted on the Colorado Springs SBC. . . . Clay-colored Sparrow-arrival at Hanna Ranch 4/30 (PA). 1 on the Durango SBC was unusual. P. Moulton reports upwards of 750 at Bonny 5/12 and 300 there the next day. "Monotypic flocks infested every thicket and swarmed every fence-line, and their enthusiastic, if somewhat unaccomplished songs formed a nearly constant background to our efforts in the field," he reported. . . . Brewer's Sparrow-PM could find none among the aforementioned hoards of Clay-colored; 103 reported from the entire

state. . . Harris' Sparrow-266 individuals reported 4/22-5/12, not including a bird that wintered in Meeker (JW). . . White-crowned Sparrow-several observers noted lower than usual numbers, although one observed twice the usual number. . . . White-throated Sparrow-about 20 individuals reported, all but 2 in the Denver-Boulder area. . . . Fox Sparrow-five observations of about 7 birds, from throughout the state. . . . Lincoln's Sparrow-earliest was 4/22 at Barr (PM). . . . McCown's Longspur-5 reported from PNG 4/20 (FCAS), the only longspur reported this spring.

INITIALED OBSERVERS: Peggy Abbot (PA), Bob Andrews (BA), Steve Bissell (SB), Chip Blake (CB), Ann Bonnell (AB), Winston William Brockner (WWB), Charles Campbell (CC), Pilk Carter (PC), Charles Chase (CCh), Jeanne Conry (JC), Kevin Cook (KC), Virginia Dionigi (VD), Bill Ervin (BE), Dick Esposito (DE), Margaret Ewing (ME), Mary Fischer (MF), Jim Fitzgerald (JF), Elva Fox (EF), Alan Crockett (AC), Dave Galinet (DG), Peter Gent (PG), M. Getman (MGe), Mary Griest (MG), David A. Griffiths (DAG), JR Guadagno (JRG), Freeman Hall (FH); Mark Holmgren (MH), David A. Jasper (DAJ), Frank and Jan Justice (F&JJ), Hugh Kingery (HK), Ron Lambeth (RL), Larry K. Malone (LKM), Tim Manolis (TM), Mick Manson (MM), Ted and Lois Matthews (T&LM), Eva McGregor (EM), John Merchang (JM), Mike Middleton (MMI), Mike Moulton (MMO), Pete Moulton (PM), Ed Muhr (EMu), Melvin T. Nail (MTN), Warner K. Reeser (WR), Joe Rigli (JR), Terry Root (TR), Shirley Sawtell(SS), MJ Schock (MJS), Mildred O. Snyder (MOS), Henry M. Stevenson (HS), EC Thomas (ECT), Van Truan (VT), Judy Ward (JW), Jim and Rosie Watts (J&RW), Bruce Webb (BW), Pat Wheat (PW), Elinor Wills (EW), Craig Williams (CW).

ORGANIZATIONS: Boulder Audubon Society (BAS), Boulder Bird Club (BBC), Colorado Field Ornithologists (CFO), Denver Field Ornithologists (DFO), Ft. Collins Audubon Society (FCAS), Foothills Audubon Club (FAC).

ABBREVIATED LOCATIONS: Blue Mesa Reservoir (BMR), University of Colorado at Boulder (C.U.), Monte Vista National Wildlife Refuge (MVNWR), Pawnee National Grasslands (PNG), Rocky Mountain National Park (RMNP).

OTHER ABBREVIATIONS: Spring Bird Count (SBC), various observers (v.o.)

## GRACE'S WARBLER NESTING ON COLORADO'S EASTERN SLOPE

by

Dave A. and Carolyn Griffiths, 32 Massari Rd., Pueblo, CO 81001  
Mel Hull, Rte. 5, Box 326 and  
David Silverman, P.O. Box 362, Rye, CO 81069

The Grace's Warbler is a fairly common breeder in the pine forests of Arizona, New Mexico, and south to Central America. In Colorado the most well known breeding grounds are in the southwest corner of the state near Durango. Reports of the Grace's Warbler in eastern Colorado are rare and only in migration.

On July 21, 1978, Carolyn and Dave Griffiths and David Silverman observed a Grace's Warbler at Silverman's home in Rye, Colorado. The bird was photographed by Griffiths with an SLR 200 mm lens. The warbler was seen several times at regular ten to fifteen minute intervals. Each time it was carrying an insect in its beak. Its behavior led us to suspect the bird was nesting in the Rye area.

The first observation in 1979 of the Grace's Warbler in Rye was made by Silverman in his yard on April 28. It was a singing male. From late April to early June, Silverman regularly heard and observed singing males near his home. At least four different singing males were heard on May 13, 1979. After approximately June 10, singing males were heard much less frequently. On August 6, 1979, Mel Hull, a long time resident of Rye, reported a juvenile Grace's Warbler at his home. He had also seen juveniles in August, 1977 and 1978. The latest summer observation of a Grace's Warbler in Rye was made by Silverman on August 21, 1978.

No actual nest has been found in Rye. The Grace's Warbler's nest is usually high in the ponderosa pines making nest discovery very difficult. But we feel that its nesting in Rye is certain based on 1) the presence of singing males from late April to early June, 1979; 2) regular observations of the Grace's Warbler in the same area from late April to late August, 1979; 3) the observations of young juvenile birds in August, 1977, 1978, 1979 by Mel Hull.

This report marks the first nesting record of the Grace's Warbler on the eastern slope of the Rocky Mountains. Rye is the furthest eastern point in the United States where the Grace's Warbler has ever been found to breed. It is located about 35 miles (56 km) southwest of Pueblo, Colorado; Rye's elevation is approximately 7000 feet (2133.6 km). All observations of the Grace's Warbler have been made about one mile (1.6 km) south of Rye's corporate limits. There are many homes in the area interspersed among the thin stands of ponderosa pines where we have usually observed these birds.

## SUMMER REPORT JUNE 1 - AUGUST 31, 1979

by Charles A. Chase III, 1380 Brown Circle, Boulder, Colorado 80303

## Loons through Herons

A Common Loon stayed unusually long at Blue Mesa Reservoir. As usual, many Eared Grebes nested at St. John's Annex, with only a few reports from the western slope. Even lower numbers of Western Grebes were seen this summer than in past years with only two broods noted. Double-crested Cormorants enjoyed a bonus year, especially with the large numbers at now-flooded Chatfield Reservoir. The San Luis Valley heron and egret colonies are doing quite well with greater than ever numbers of White-faced Ibis. The Least Bittern at Sawhill Ponds, a second nesting record for Colorado, hatched five young.

<u>Species</u>	<u>Date</u>	<u>Location</u>	<u>Number</u>	<u>Observers</u>
Common Loon	6/2;28	Julesburg; Crawford Res.	2;1	JR;KC
	7/4,29,8/13	Blue Mesa	1	SH,KC
	7/29;8/5	L John,Jackson Co; Julesburg	2;1	R&DR
Eared Grebe	thr. July;7/29	E plains;North Park	200+;100's n	vo;RAR
	8/16;all summer	Axial;Blue Mesa	1;1-2	D&JW;KC
Western Grebe	all summer	Blue Mesa;Alamosa Refuge	3;2	KC;MN
	all summer	Timnath Res; Arkansas Valley	2 br; <u>very low</u>	RAR;CAC
	6/3,10;7/22	E Plains	200	vo
Pied-billed Grebe	6/2;7/1	Julesburg;S of Loveland	1;9	JR;AM
	--;8/16	Timnath Res; Axial	5+ br;6	RAR;D&JW
	6/23,7/15,24	E Plains	9	vo
White Pelican	7/22;29	nc Colo;Riverside Res	42;250+	JR;RAR,GM
	all summer	Ft Collins	25(feeding fl)	RAR,GM
Double-crested Cormorant	all summer	Chatfield;Antero Res	20-70;2 n	HK;CAC
	all summer	E Plains	48	vo
Great Blue Heron	all summer	Chatfield;E slope;W slope	71 n;62;11	HK;vo;vo
Cattle Egret	6/11;17	L John;Pueblo	3;1	RR;VT
	--	Riverside Res	8	RAR
Great Egret	mid-July;8/4	Cheraw;Red Lion	1;4	CAC;R&DR
Snowy Egret	6/3,17,24;8/5	E Plains;Julesburg	5;1	vo;R&DR
	--	Riverside Res	good nesting	RAR
Black-crowned Night Heron	all summer	E slope	24	vo
	7/29	Riverside,N Park,San Luis V	thriving col	RAR
	7/29	L John	20	R&DR
American Bittern	--	Ft St Vrain	2 pr-flooded	RAR
Least Bittern	6/1-7/31	Sawhill Ponds	Nest,5 young	vo
White-faced Ibis	6/10;7/8	N Colo;San Luis V	3;100+ a,20+n	JR;RAR
	late July;8/12	Latham;Blue Mesa	3 a,1 y;1	RAR;KC



## Waterfowl

Good numbers of nests throughout the state typify this fairly wet breeding season. There were also large numbers of non-breeders around in the summer. If observers could note male/female ratios of waterfowl in the summer it is likely they would note many bachelor flocks, especially dabblers. Two Wood Duck nests and a third pair in north-central and northeast Colorado reflect the apparent westward expansion of this beautiful woodland duck.

<u>Species</u> <u>Date</u>	<u>Location</u>	<u>Number</u>	<u>Observers</u>
Canada Goose 6/10 on;6/2 on	W slope;E slope	1000+;400	vo;vo
Mallard --	all state	fair nos of n	vo
Gadwall 6/2;7/1	Julesburg;Axial	135;1a,6y	JR;D&JW
Pintail 6/10;--	Silt;E plains	1a,1y;95	RP;vo
Green-Winged Teal 8/19;--	Axial;John Martin Dam E Plains	6;100-150 20	D&JW;CAC vo
Blue-winged Teal 7/31;--	McCoy;E slope	1a,6y;100+	M&CE;vo
Cinnamon Teal 6/25 on;7/1 6/2 on	W slope;Loveland area E slope	33;1 pr,10y 53	vo;AM vo
Northern Shoveler 6/2;6/4 --	Julesburg;Silt John Martin Dam	100;2 pr 100+	JR;RP CAC
Wood Duck 6/2;May-June	Julesburg;Timnath Res	1 pr;2 n	JR;RAR
Redhead 6/2;7/1 7/6;6/10 on --	Julesburg;Loveland Axial;E slope Alamosa, Monte Vista	12;1 pr;2y 10;40 500(pop x3)	JR;AM D&JW;vo MN
Ring-necked Duck 6/2;7/3	Julesburg;Spragues Lake	1 pr;2 pr	JR;WKR
Ruddy Duck 6/2 on;7/1	E plains;Loveland area	50;1 pr,4y	vo;AM
Common Merganser 6/10;-- 7/2;7/23	nr Newcastle;Silt McCoy;Grand Lake	1;1 fam,12-13 1a,8y;5a,w/y	JM;RP M&CE;DJ
Hooded Merganser 6/24	Cherry Ck	2 im	vo

## Vultures through Rails

The few numbers of nesting Turkey Vultures in the past several years are becoming a matter of concern! Observers need to spend time trying to locate nests of these declining birds. On the other hand, Mississippi Kites appear to be doing quite well in the Arkansas Valley, with at least 26 nests. The field trip to Latilong 13 in early June yielded a Broad-winged Hawk for at least three days. Seven pair of Osprey nesting represent a good breeding effort this year. The wet spring brought a good hatch in quail and pheasants.

<u>Species</u>	<u>Date</u>	<u>Location</u>	<u>Number</u>	<u>Observers</u>
Turkey Vulture	6/3 on; 6/4, 10 6/9 on	W slope; Brush Hollow Res E slope; John Martin Dam	50; 1 33; n failed	vo; J&RW vo; CAC
Mississippi Kite	6/1-8/15 --	Arkansas V Lamar	56-60 (26 n) 32-34 (14 n)	CAC CAC
Goshawk	6/17 on; 6/24 --; --	E slope; Wet Mts Durango; Grand Lake	3; 2 nw/y; nw/2 y	vo; VT EF; DJ
Sharp-shinned Hawk	6/18; 7/7 6/1-7/21	W slope; E slope Garden of the Gods	3; 3 1	vo; vo J&RW
Cooper's Hawk	6/3, 7/13, 8/26	Axial	1, 1, 1 im	D&JW
Red-tailed Hawk	--	Foothills/mtns; E&W Colo	many nests	vo
Broad-winged Hawk	6/1-3	latilong 13	1	vo
Swainson's Hawk	-- 6/2 on	Berthoud E slope; W slope; Pawnee Gr	1 pr w/1-2 flg 24; 3; nos down	vo vo; vo; CO
Rough-legged Hawk	--	nr. Silt	1	RP
Ferruginous Hawk	6/10 on all summer	E plains; Pawnee Gr SE Colo	7; 31 n, 102 y 1 every 10th day	vo; CO CAC
Golden Eagle	6/1; 7/15 6/24; 7/1; 7/30 6/3	CE Colo; Curecanti NRA Axial; Animas City Table Mtn	3; 5 aeries 6 a, 5 y; 1 im 4 im	vo; KC D&JW; RE DJ
Bald Eagle	6/6, 7/6	Grand Lake area	1	JK
Northern Harrier	6/24; 8/24 --; --	Cherry Creek; Axial Arkansas V; Rock Creek	3; 1 lower #'s; n	vo; D&JW CAC; M&CE
Osprey	--; --	Shadow Mt Res; Grand Lake	2 pr; 5 n	WKR; DJ
Prairie Falcon	6/10, 17; 7/14-24 --; 6/30	Red Rocks; Troublesome Cr Pawnee; Daniels Park	n, 2y; 1 pr nesting; 1	W&SB; DJ CO; vo
Peregrine Falcon	mid-July; --	Black Canyon; Chimney Rock	1-2; n, 3-5	CS; EF
Merlin	6/30	Castlewood Canyon	1	vo
American Kestrel	6/2 on; 6/17 on --; --	E slope; W slope Grand Lake; Arkansas V	73; 14 20/day; few br	vo; vo DJ; CAC
Blue Grouse	early June; 6/22 7/12; 7/15 --	Black Canyon; Latilong 11 Never Summers; Mueller Ranch Hermosa Park	1; 1 3; 7 (1a, 2 y) 2	CS; RW DJ; J&RW EF
White-tailed Ptarmigan	--	Grand Lake	5-8/day	DJ
Sage Grouse	6/16	Axial	1 a, 6 y	D&JW
Common Bobwhite	6/2; 6/20 --	Julesburg; Evergreen Arkansas Valley	4; 1 2x nos of 1978	JR; TS CAC
Scaled Quail	--	Arkansas Valley	2x nos of 1978	CAC
Ring-necked Pheasant	6/2; 6/2 6/23; -- --	Windsor Res; Julesburg Boulder; nr Silt Arkansas Valley	4; 6 10; 9 y good yr	vo; JR vo; RP CAC
Chukar	7/5, 8	Evergreen	1	GC; W&SB
Virginia Rail	6/10; 7/1 --	N Colo.; Axial Chatfield	1; 1 nest flooded	JR; D&JW HK

<u>Species</u>	<u>Date</u>	<u>Location</u>	<u>Number</u>	<u>Observers</u>
Sora	6/10;7/1	nc Colo;Axial	1;1	JR;D&JW
--	--	Chatfield	flds destroy n	HK
Coot	6/1;6/2	nr Silt;Julesburg	100+,y;115	RP;JR
	6/3 on;8/19	E slope;Axial	80;5	vo;D&JW

### Shorebirds, Gulls and Terns

This was a bonus year for most breeding shorebirds, especially in eastern Colorado, starting off with several lingering migrants including several peeps and Black-bellied Plovers. The breeding season heralded large numbers of Snowy Plovers, Killdeer, Long-billed Curlews and Spotted Sandpipers. Mountain Plovers may have been a little lower than last year, but not by much if so. California Gulls and Forster's Terns also fared well this year. Three initial nesting attempts by Least Terns were all flooded in the Arkansas Valley. However, it appeared that the birds all grouped together and re-nested quite close to each other. At least four young were produced.

<u>Species</u>	<u>Date</u>	<u>Location</u>	<u>Number</u>	<u>Observers</u>
Snowy Plover	all summer;6/17	Arkansas V;L Meredith	66 n,200+ind;6	CAC;D&CG
Killdeer	throughout Colorado,	excellent year w/many successful broods		vo
Mountain Plover	6/2,17	Pawnee Grasslands	7,3,10% reduct	vo
--	--	Arkansas Valley	14 n (=1978)	CAC
	8/3	Pueblo	150	VT
Black-bellied Plover	late June	Arkansas Valley	75-100 migrants	CAC
Ruddy Turnstone	8/5	Julesburg	1	R&DR
Common Snipe	6/4 on;7/22	W slope;Pinigree Pk, Pine Pt	20;2 y	vo;DE,DJ
	6/23	Boulder	2	vo
Long-billed Curlew	--	Arkansas Valley	13 nests	CAC
Whimbrel	6/10	Ft Morgan	1	JRg
Upland Sandpiper	6/2;6/5	Julesburg;Hoyt	2;6	JR;JRg
	Early Aug	Arkansas Valley	33 (early)	CAC
Spotted Sandpiper	6/8,23,8/2,17	W slope	3,1jv,2,1	vo
	6/10 on	E slope	28	vo
	7/24;--	Sawhill Ponds;Nee Noshe	1;1ln1-2/SE R	CAC
Solitary Sandpiper	7/26-8/9;8/24	Ft Morgan;Axial	7;2	JRg;D&JW
Willet	7/15;8/17	Chatfield;Axial	1;1	vo;D&JW
Greater Yellowlegs	7/22	NC Colo	1	JR
Lesser Yellowlegs	7/15;7/22,31	Chatfield;NC Colo.	8;7	vo
Long-billed Dowitcher	7/22	NC Colo	20	JR
Stilt Sandpiper	6/10;all summer	NC Colo;Arkansas Valley	1;100's	JR;CAC
Western Sandpiper	6/2	Julesburg	1	JR

<u>Species</u> <u>Date</u>	<u>Location</u>	<u>Number</u>	<u>Observers</u>
Least Sandpiper 6/2;7/22	Julesburg;NC Colo	2;1	JR
Marbled Godwit 7/3;8/5	Lake Meredith;Julesburg	2;1	EW;R&DR
American Avocet 6/2 on;-- by mid/late July	E slope;Fossil Creek Cheraw	130;1n 3y 12n,300-400ind	vo;AM CAC
Black-necked Stilt 15	Arkansas Valley	1n,3a,4y,6eggs	CAC
Wilson's Phalarope 6/10-7/14 6/2,10,17,7/22 6/24;--	Brush Creek NE and C Colo Axial;Arkansas Valley	2m,1f 59 4;150+nonbrdrs	JM vo D&JW;CAC
Northern Phalarope 6/2	Julesburg	2	JR
Herring Gull 8/17	Blue Mesa	1	KC
California Gull 6/2 on;7/4	plains;Antero Res	120;226y bnded (300-400)	RAR
Ring-billed Gull June-July 7/24 -- --	Julesburg,NC Colo;Ch Cr,Chat N Boulder Grand Lake area Arkansas Valley	420 2 many immatures 10-20nonbredrs	vo MM DJ CAC
Franklin's Gull 6/2;6/10 7/22;7/24-8/1 8/7	Julesburg;Chatfield NC Colo;N Boulder Arkansas Valley	20;15 630;300 high of 700	JR;HK JR;MM CAC
Forster's Tern 6/2;6/17;7/22 7/29;8/12	Julesburg;NE Colo;NC Colo L John,Jackson CO;Blue Mesa	1;4;3 100j,30-50pr;1	vo R&DR;RAR;KC
Common Tern early June	John Martin	2	CAC
Least Tern --	Arkansas Valley	6n, 3 ren,4y	CAC
Black Tern 6/2;6/10;7/22 --	Julesburg;Pawnee;NC Colo Arkansas Valley	150;10;10 70 (1/4 imm)	JR;vo CAC

### Doves through Woodpeckers

Large numbers of Mourning Doves were noted in the plains, but I believe this is due to greater numbers of observers, especially Tom Olson and his dove study in northeast Colorado. Yellow-billed Cuckoos were present in good numbers throughout eastern Colorado. An excellent season for owls with nine species reported. Roberta Winn's project with Flammulated Owls yielded five nests in the Florissant area. Two Spotted Owls found by Bruce Webb in Mesa Verde, a Boreal Owl on Trail Ridge Rd., as well as a Saw-whet in Latilong 11 represent many hours of effort that have yielded possible breeding by several unusual owls. Several Calliope and an unverified Rivoli's Hummingbird were the high points for that family of birds this season, which was otherwise normal. Lewis' Woodpeckers were again reported in good numbers from Mesa de Mayo (a veritable haven for unusual birds, but unfortunately the landowners still meet all trespassers with rifles).

<u>Species</u> <u>Date</u>	<u>Location</u>	<u>Number</u>	<u>Observers</u>
Band-tailed Pigeon 6/16;23;27	nr Bailey;Boulder;RMNP	22;50;15+	vo

<u>Species</u>	<u>Date</u>	<u>Location</u>	<u>Number</u>	<u>Observers</u>
Rock Dove	6/2-8/1	16 localities	abundant	vo
Mourning Dove	--;--	W slope;E foothills,mts	8;106	vo;vo
	--	E plains	550	vo
Yellow-billed Cuckoo	5/3 on;--	Boulder area;Arkansas V	11;14+ n	vo;CAC
	6/2;24	Julesburg;Cherry Ck	1;2	JR;vo
	7/13;15	S of Fountain;Chatfield	pr; 1	RW;vo
Black-billed Cuckoo	--;7/10	Arkansas V;S of Fountain	2;1	CAC;RW
Roadrunner	6/3;6/10	Durango airport;John Martin	1;1	EF;CAC
Barn Owl	7/6,18;late July	N Boulder;Ft Collins area	1;4n w/y, eggs	MM;RAR
	--	Arkansas V	11 n	CAC
Screech Owl	6/2,4	Brush Hollow Res	6 (family)	J&RW
Great Horned Owl	6/10 on;--	W slope;E foothills,mts	25(1n,6y);3(2y)	vo;vo
	--	plains	8 (3n,3y)	vo
Flammulated Owl	6/6-7/19;7/14	Florissant;W Creek area	10-12,5n;1	RW;vo
	--	Gunnison, Blue Mesa	4	KC
Burrowing Owl	6/10 on;--	plains;Pueblo West	67;10-15p	vo;VT
	--	Arkansas Valley	6+ pr	CAC
Spotted Owl	June	Mesa Verde	2	BW
Long-eared Owl	8/16	Axial	1	D&JW
Boreal Owl	--	Trail Ridge Rd	1	DJ
Saw-whet Owl	6/23-25	Latilong ll	1(n hole)	RW
Common Nighthawk	6/2 on;6/4 on	E Colo;W Colo	82;120+	vo;vo
	7/27	Radium	200+(1 flock)	RT
Black Swift	--;6/27	Rocky Mt Natl Park	several;1	WKR;vo
Chimney Swift	6/2-8/1;6/2	Boulder campus;Denver	n;grps of 2-4	MM;RG
	--	CSU/Ft Collins	4	RAR
White-throated Swift	6/1 on	W slope	23	vo
	6/1	E slope	153	vo
Black-chinned Hummingbird	mid June on	Axial, Pueblo	15-20 nesting	D&JW,D&CG
	late July/Aug	McCoy	young at fedr	M&CE
Broad-tailed Hummingbird	--	good productn in mt region	200	vo
Rufous Hummingbird	--	Small # in cent mt region	43	vo
Calliope Hummingbird	7/16;7/21	Bear Cr Canyon;Gr Lake	4;1	J&RW;DJ
Rivoli's Hummingbird	June	Westcreek	1(unverified)	RW
Belted Kingfisher	6/10 on;7/1	W slope;E slope	7;12	vo;vo
	--	Shadow Mt,L Granby	absent	DJ
Common Flicker	Average 2 pair/report throughout all regions			
Red-headed Woodpecker	6/2,10,23,7/22	E plains(6 locales)	17	vo
	July/August	Nee Noshe,Two Buttes	n w/5y	CAC
Lewis' Woodpecker	5/30-7/31;6/23	Roaring Fork;Boulder area	3 a- 2a,3y;2	RP;vo
	--;7/11	Animas River;Mesa de Mayo	6 y;25+	EF;CAC

<u>Species</u>	<u>Date</u>	<u>Location</u>	<u>Number</u>	<u>Observers</u>
Yellow-bellied Sapsucker	6/24;25	McCoy;GGSP	1n;1	M&CE;MM
	7/7;--	South Park;West Creek area	6(n);5 pr,3n	vo;RW
	--	Grand Lake area	status better	DJ
	--	Fairplay	#'s lower	CAC
Williamson's Sapsucker	6/27	Rocky Mtn Natl Pk	4	vo
	6/14;8/22	Axial;Evergreen	2;n w/y, 1 im	D&JW;W&SB
	Early July	Black Canyon	1 pr nesting	CS
	7/21;--	Eldora;West Creek	2(n);20	vo;RW
Hairy Woodpecker	6/9 on;--	E. slope;West Creek	16(5n);1n w/y	vo;RW
Downy Woodpecker	6/23;7/15	Boulder area	8;6	vo;MM
	7/1-7/10;7/7	Colo Springs;South Park	1 pr.;2 a	J&RW;vo
	--	La Junta	1 n, 1 y	CAC
Northern Three-toed Woodpecker	7/7;7/14	South Park;Hermosa Park	1;2 y	vo;EF
	mid-July;--	Rocky Mt Natl Pk;Endo V	1 pr,n;n	E&CH;WKR

### Flycatchers through Wrens

A good selection of flycatchers were found this season with noteworthy birds from each of the four corners of the state. The very large numbers of breeding Horned Larks are attributed to Tom Olson and his studies in the northeastern plains. An incredible 807 Bank Swallows in mid-July typifies the large numbers of swallows observed throughout the summer. The declining White-necked Raven and ever-increasing Common Crow were hardly ever mentioned by observers throughout the state. These two birds merit close watching since it appears the crows are pushing the ravens out of many nesting areas. The large numbers of nests located of chickadees, nuthatches, etc. is indicative of the many summer cabins and hikers out in the mountains. It would be interesting if people would keep notes on the use of such nest holes over a series of years.

<u>Species</u>	<u>Date</u>	<u>Location</u>	<u>Number</u>	<u>Observers</u>
Eastern Kingbird	6/4 on;6/1 on;6/2	W slope;E slope;Julesburg	35;70(15n);65	vo;vo;JR
Western Kingbird	6/2 on;6/1 on	W slope;E slope	33;160 (17 n)	vo;vo
	all summer	Pueblo;Arkansas Valley	nos low;45+ n	VT;CAC
Cassin's Kingbird	6/11-12;27	Uteyville;Campo	3 n;1n	CAC
Scissor-tailed Flycatcher	5/17-18	Latilong 13	1	SB,WG
Great Crested Flycatcher	6/2	Julesburg	2	JR
Ash-throated Flycatcher	8/5;--	Elk Creek C;Cox Canyon(nr NM)	1;1n	KC;EV
	8/24	Axial	1	D&JW
Say's Phoebe	6/10 on;--	W slope;E slope	25(7n);12,2n	vo;vo
	--	Pueblo	20 y(4 clch 5)VT	
Traill's Flycatcher	--	Brush Creek	regularly	JM
Hammond's Flycatcher	6/17	Idledale	1 n	vo
	--	Horseshoe Park	2 pr	WKR
Dusky Flycatcher	6/3	Axial	2, bldg n	D&JW
	6/10;--	NC Colo;Hack Ranch (Jeffco)	1;0-unusual	JR;CH,KH

<u>Species</u>	<u>Date</u>	<u>Location</u>	<u>Number</u>	<u>Observers</u>
Gray Flycatcher	6/3,4	Iles	1,2	D&JW
Western Flycatcher	6/10;17	NC Colo;Idledeale	2;8	vo
	6/18,7/15;6/21 on	McCoy;E slope	n,ly;31(4n)	M&CE;vo
Western Wood Pewee	6/6 on	E slope	80 (7n)	vo
	6/6 on	W slope	34 (1n)	vo
Olive-sided Flycatcher	6/3 on;6/2 on	W slope;E FtHill,Mt(6 loc)	6;7	vo
Horned Lark	6/17	NE Colo	250	vo
	6/2 on;7/18	E slope(17 loc);Nev Summers	200+;1 n	vo;DJ
Violet-Green Swallow	common breeder on	W. slope;much less common breeder on		vo;vo
Tree Swallow	6/2 on;6/2 on	W slope;E slope	50+;104(7+n)	vo;vo
	--	Chatfield	5-8 pr. n	HK
Bank Swallow	7/22;7/24	NC Colo;Sawhill	807;25-30 pr,n	JR;MM
	--	Axial	2-3 pr, n	D&JW
Rough-winged Swallow	6/2 on;6/17 on	E slope;W slope	35(1n);12(4n)	vo;vo
Barn Swallow	very common nester	throughout Colorado		
Cliff Swallow	6/2 on	John Martin Dam	400 (2x 1978)	CAC
	6/2 on	E slope	800+(100+n)	vo
	6/10 on	W slope	200+(#'s down)	vo
Purple Martin	6/2-4;6/20,7/13	nr Silt;San Juan NF	2-3;pr,y	RP;VS
	8/17	Axial	4	D&JW
Gray Jay	6/6;6/12,7/14	Grand Lake;West Creek	many juv;6(a,y)	DJ;vo
	6/14	Yellowjacket	1	D&JW
Blue Jay	--;6/3-7/1	Hasty;Colo Springs	n,3y;51(3y)	CAC;J&RW
	6/9 on	E slope	22 (5 nests)	vo
Steller's Jay	Few reports, small numbers			
Scrub Jay	6/10 on;7/3	NC Colo;Axial	40;3	vo;D&JW
	8/2	W slope	5 (1n,3y)	vo
Black-billed Magpie	6/22 on;6/2 on	W slope;E slope	60(17+n);300+	vo;vo
	7/24	Sawhill Ponds	150	MM
Northern Raven	6/15,7/13;--	West Creek;Roaring Fork	n,2y;1-2	RW;RP
	--;6/27	E slope;RMNP	18;18	vo;vo
	6/25	Grand Lake area	6-8	DJ
White-necked Raven	6/1-7/25	SE Colo	7	CAC
Common Crow	Why so few reports of such a common and increasing species?			
Pinon Jay	6/1-6/23;6/16	Colo Springs;Axial	6;2	J&RW;D&JW
Clark's Nutcracker	6/3;6/6,7/14,28	Table Mt;Eagle area	6(fam);4+	DJ;JM
	7/1,28;8/1	Mt Evans;nr Brainard Lk	4,5;3, more h	vo;MM
Black-capped Chickadee	--	W slope (4 loc)	33(5 n)	vo
	6/3 on	E slope (15 loc)	44	vo
Mountain Chickadee	--	Intermountain region	70, 7+n	vo
Plain Titmouse	6/3,7/3	Axial	1,1	D&JW
Bushtit	--	nr Silt	1+	RP

<u>Species</u> <u>Date</u>	<u>Location</u>	<u>Number</u>	<u>Observers</u>
White-breasted Nuthatch 6/16;6/25	nr Bailey;GGSP	2 (n);1	vo;MM
7/10;7/8,22,28	Estes Pk;E Foothills	n,many y;3,4,3	WKR;vo
Red-breasted Nuthatch 6/10;7/21,8/16	Kossler L;Axial	2 y;10	EV;D&JW
7/7;8/1	South Pk;Brainard Lk	4;numerous	vo;MM
--	Hermosa, La Plata	more numerous	EF
Pygmy Nuthatch 6/6/on;6/27	E slope(10 loc);RMNP	34 (5n);5(n)	vo;vo
7/14;7/22	nr Jamestown;NC Colo	15 (1 fl);25	MM;JR
Brown Creeper 6/16;7/28	nr Bailey;Eagle	3;5-6 (fam)	vo;JM
8/1;8/29	nr Brainard Lk;Aspen	1;1(new area)	MM;CH,KH
North American Dipper 6/6 on;5/17 on	E slope(7 loc);W slope(3 loc)	25(6+n);20(16y)vo	
House Wren --	Front Range;Plains W slope	common;0 fairly common	vo;CAC, JR vo
Bewick's Wren 7/3,16	Axial	2,9	D&JW
Long-billed Marsh Wren 6/10,17,7/22	NE and C Colo plains	6,4,1	JR,vo
Canyon Wren 6/10,7/22;6/13	NC Colo foothills;John Martin	2,3;1n,3-4y	JR;CAC
6/1-7/27;7/11	Garden of Gods;Royal Arch Tr	2;1	J&RW;MM
Rock Wren 6/3 on;6/16 on	W slope(3 loc);E slope(4 loc)	11+;25(3+n)	vo
6/9	Gateway Mature Area	6	vo

#### Mockingbirds through Shrikes

Mockingbirds were not observed in Durango, which seems unusual. Robins had an excellent nesting season. Only six Swainson's Thrushes were reported throughout the state. Mountain Bluebirds had an average nesting year on the west slope, but several east slope observers commented on their absence. Townsend's Solitaires were well represented in the upper mountains. Young Blue-gray Gnatcatchers were observed in Axial in early July. After such a good migration for this species, it seems odd that only seven individuals were reported this summer. Water Pipits were common breeders on the tundra. Jack Merchant reports that the two Cedar Waxwings he observed at his home in Eagle were the first there for many years. Nine Loggerhead Shrike nests were reported, all from the eastern plains.

<u>Species</u> <u>Date</u>	<u>Location</u>	<u>Number</u>	<u>Observers</u>
Northern Mockingbird 6/10,17;--	NE Colo;Durango	2,1n;0(unusual)	vo;EV
Gray Catbird 6/2,10,7/22	NE and C Colo	1,1,2	JR,vo
6/3;7/5	Chatfield;Durango	2;1(w/n materl)	vo;RE
--	Animas River	in abundance	EF
Brown Thrasher 6/2;7/10	Julesburg;Campo	14;n,2y	JR;CAC
--	Fort Morgan	n,failed	JRg
Sage Thrasher 6/15,8/19;6/10	Axial;Pawnee Grasslands	1;1	D&JW;vo
American Robin	good production,lots of young. Approx. 50 pair, 150 young on both West and East slopes. Good data from East slope(38+ reports)		



<u>Species</u>	<u>Date</u>	<u>Location</u>	<u>Number</u>	<u>Observers</u>
Hermit Thrush	6/25 on; 6/14 on	E slope; W slope	26+a, 2n; 3-4/re	MM; vo
Swainson's Thrush	6/9; 7/21	Gateway Nature area; Eldora	3; 1	vo; vo
	6/10, 24	NC Colo, Cherry Creek	1, 1	vo
Veery	6/4; 6/24, 7/7	Axial; nr Eagle	2; 1, 2-3	D&JW; JM
Western Bluebird	6/10; 17	NC Colo; Idledale	2m; 4	JR; vo
	6/29 on	West Creek	1 pr (nesting?)	RW
Mountain Bluebird	6/2 on	W slope (4 locales)	1-2 pr/report	vo
	6/2 on; 6/30	E slope; Castlewood Canyon	nos low; 13	vo; vo
Townsend's Solitaire	--	Upper mt. regions	1-3n/report (13)	vo
Blue-Gray Gnatcatcher	6/2; 7/4, 22	Canon City; Axial, NC Colo	1; 5 (2a, 3y), 1	J&RW; D&JW, JR
Ruby-crowned Kinglet	6/2-8/1; 6/16 on	Boulder area; Front Range	7; 24	MM; vo
	7/7; mid-July	South Park; Grand Lake	15; 2a, 2Y	vo; DJ
Water Pipit	--	Alpine areas	numerous, few n	vo
Cedar Waxwing	6/10; 7/24	nr Lyons; Eagle	1pr; 2 (1st yrs)	B&SH; JM
Loggerhead Shrike	--; 6/2 on	Durango; Plains	v few; 9+pr w/n	EF; vo

#### Starlings through Warblers

Four Bell's Vireos seen at Tamarack Ranch on June 3, were probable breeders. A Yellow-throated Vireo was seen at Crow Valley Park by Courtney Buechert and Phil Schaeffer in early July. Warbling Vireos were described as the most common bird in aspens groves. The only Yellow-rumped Warblers reported were "Audubon's" type. The only Grace's Warblers reported were four in Rye on June 24. It is always surprising that this bird, certainly one of the state's most delightful breeders is reported so infrequently. For the last two springs it has been ignored completely and last summer there was only one report (also from Rye). Chats were found in good numbers except in Durango where Elva Fox noted their complete absence.

<u>Species</u>	<u>Date</u>	<u>Location</u>	<u>Number</u>	<u>Observers</u>
European Starling	6/2 on	Plains	abundant	vo
	7/15, 19	McCoy	2n, 3y	M&CE
Bell's Vireo	6/3	Tamarack Ranch	4	JR
Yellow-throated Vireo	7/3, 6	Pawnee Grasslands	1	CB
Solitary Vireo	6/10 on	E slope (5 loc)	5+ pr n	vo
	6/16 on; 7/4	W slope (3 loc); Axial	5+ pr n; common	vo; D&JW
Red-eyed Vireo	6/10; 7/22; 7/17	NC Colo; CU Campus; CU Campus	7, 2; 1+; 1+	JR; MM
	6/14, 27-7/15	Colo Springs	pr. n, 4	CLC
Warbling Vireo	all summer	Intermountain region	common-mst com	bird in aspens vo

<u>Species</u>	<u>Date</u>	<u>Location</u>	<u>Number</u>	<u>Observers</u>
Black-and-White Warbler	6/1	Boulder	1	PC
Orange-crowned Warbler	7/31;6/3	Routt Nat Forest;Chatfield	1;1	R&DR;vo
Virginia's Warbler	6/10	Bluebell,NC Colo	1,5	MM,JR
	6/17;7/11	Idledale;Royal Arch Trail	4;6	vo;MM
Yellow Warbler	6/2-7/22	E slope	101(12+pr w/n)	vo
	--;--	W slope;Durango	many; 1a,3y	vo;RE
Yellow-rumped Warbler	6/9-8/1	most reports from E slope	num (all Audub)	vo
Black-throated Gray Warbler	6/3,7/4,16;6/16	Axial;nr Eagle	3,6,2;1	D&JW;JM
Grace's Warbler	6/24	Rye	4	W&SB
Chestnut-sided Warbler	6/2	Windsor Res	1	vo
Ovenbird	7/20	Rawlins Way	1	W&SB
MacGillivray's Warbler	6/10,25	Bluebell	1,2	MM
	7/1,8;7/14;22	nr Eagle;W Creek;Conifer area	1;1;4	JM;RW;vo
Common Yellowthroat	6/24;6/on	Cherry Creek;Boulder/Loveland	26;20+ pr	vo;vo
	June;8/19	John Martin;Perch Pond	15+ pr; pr	CAC;D&JW
Yellow-breasted Chat	6/3;7/15;6/10	Chatfield;Bluebell	7,3;3	vo;MM
	6/16;--;--	NW of Loveland;Lyons; Durango	2pr;1pr;0 con- spic absent	vo;MG;EF
Wilson's Warbler	6/3,27;7/1,28	W Creek;Mt Evans	1,2(1n);2,8	RW,vo;vo
	8/16	Axial	40	D&JW
American Redstart	6/10	NC Colo plains	1 male	JR

### Bobolink through Buntings

High water levels at Chatfield harmed several species of icterids, especially Western Meadowlark and Red-winged Blackbird. Numbers of Northern Orioles were reported from the east slope, along with equally good nest success. Great-tailed Grackles failed to breed in the San Luis Valley this summer; however, one singing male was located at Hartsel. After an incredible spring migration, east slope observers commented on low numbers of Western Tanagers. However, they were more common on the western slope. A Scarlet Tanager was at the John Martin Dam on June 5. Blue Grosbeaks were again very poorly reported. Five reports of Pine Grosbeaks was noteworthy, especially after just two all spring. At least 24 individuals including 6 young of this species were observed. Brown-capped Rosy Finches were also frequently reported, with two nests found on Mt. Richtofen.

<u>Species</u>	<u>Date</u>	<u>Location</u>	<u>Number</u>	<u>Observers</u>
Bobolink	6/2;--	Julesburg;Ridgway	4 a;1 male,2a	JR;JRG
Eastern Meadowlark	6/2;8/4,5	Julesburg;Red Lion GMA	2;--	JR;R&DR
Western Meadowlark				

except for flooding at Chatfield, seemed to do quite well,50+ nests

<u>Species</u>	<u>Date</u>	<u>Location</u>	<u>Number</u>	<u>Observers</u>
Yellow-headed Blackbird				
				many birds; highly variable nest success from 0 to quite high
Red-winged Blackbird				good nesting everywhere, except Ft St Vrain where lowest in 8 yrs
Orchard Oriole	6/2; 6/2	Chatfield; Julesburg	1; 16	HK; JR
Northern Oriole	--; 6/2 on	W slope; Front Range & plains	4-5 n; common	vo
Brewer's Blackbird	--	Intermt region	abundant	breedr vo
Great-tailed Grackle	early July	Hartsel	1, 1	CAC, BE
Common Grackle	6/2-8/1; --	E slope; Ft Morgan	abndnt; ln, low	vo; JRg
	--	Chatfield	15 pr nesting	HK
Brown-headed Cowbird	6/2 on; 6/2 on	W slope (6 loc); E slope (20 loc)	90+ (ln) 120+ (2n)	vo
Western Tanager	6/2; --	E slope; W slope	low nos; 2/rept	vo; vo
Scarlet Tanager	6/5	John Martin Dam	1	CAC
Rose-breasted Grosbeak	6/2; 6/12; 30	Julesburg; Evergreen; Castlewood	2; 1; 1	JR; RO; vo
Black-headed Grosbeak	6/9 on; 5/19	Intermountain; Ft Morgan	40+a, many; 2	vo; JRg
Blue Grosbeak	6/1; 10	NC Colo; John Martin Dam	2; 5 pr n	vo; CAC
Indigo Bunting	6/16; 7/15	E slope; Durango	4 pr, n; 1	vo; EF
	--	Lake Hasty	1 pr, 4 eggs	CAC
Lazuli Bunting	6/2, 19; 6/10 on	Roaring Fork; Boulder/Loveland	3 pr; 27 (11y)	RP; vo
	6/3, 9, 10, 17, 30	E plains, foothills	8	vo
	June/July; 7/15	John Martin; Axial	3; 1 pr	CAC; D&JW
Dickcissel	7/15; 6/3	Chatfield; Jumbo Res	1; 1	vo; JR
Evening Grosbeak	--	Intermountain region	good numbers	vo
Cassin's Finch	6/1	E slope; W slope	13; 3+	vo; vo
	6/22; --	Conifer area; W Creek	20;	vo
			"a no." some w/ young, 1st	RW
			recorded during breeding season	
House Finch	--	Colorado, residential areas	2-3 pr/report	vo
Pine Grosbeak	16 June; 7/7	Grand Lake; South Park	15, 6 y ; 1	DJ; vo
	7/21, 28	Axial, Mt. Evans	1, 4	D&JW, vo
	all summer; 8/1	nr Eagle; Brainard Lk	1-2/day; 1	JM; MM
Brown-capped Rosy Finch	7/1, 28; 7/28	Mt Evans; nr Eagle, 13,000'	4, 9; 5-6	vo; JM
	7/25-8/4	nr Estes Park	normal, no n	CS
	8/1; --	Mt Toll; Mt Richtofen	1; 2n	MM; DJ
Pine Siskin	6/2 on; 6/10 on	E slope; W slope, mtns	150; good nos	vo; vo
American Goldfinch	--; --	W slope; E slope	good nos y; 18n	vo; vo
Lesser Goldfinch	6/16 on	Boulder/Longmont	9-10 pr, 4y	vo
	6/10, 7/22	NC Colo	8, 25	vo
	--; --	Hack Ranch; Durango	good nos y	CH, KH; EF
Red Crossbill	--	Intermountain region	(8-35) in July	vo

<u>Species</u>	<u>Date</u>	<u>Location</u>	<u>Number</u>	<u>Observers</u>
Green-tailed Towhee	6/10 on	E slope (8 locales)	highs of 8-9	vo
	6/16;--	nr Eagle; W slope	numerous	JM;vo
Rufous-sided Towhee	6/14 on	W slope	4a, 2 im	JRG, D&JW
	6/10 on;--	Foothills; Mesa de Mayo	7 pr; 22a, 11 im	vo; CAC

### Sparrows and Longspurs

Olsen reported 0% nesting success for Lark Sparrows in northeastern Colorado while Chase reported good success in the Arkansas Valley. Cassin's Sparrows were well reported, and especially common in the Arkansas Valley. Black-throated Sparrows were found nesting in Fowler, Crowley Co., by Dave and Carolyn Griffiths. 25-30 pairs of Chipping Sparrows were found on Mesa de Mayo. Brewer's Sparrows were reported in very good numbers. White-crowned Sparrows were virtually ignored, yet Lincoln's Sparrows were fairly common and many nests were located. McCown's and Chestnut-collared Longspurs were reported in their usual numbers from their breeding grounds in the northeastern corner of the state.

<u>Species</u>	<u>Date</u>	<u>Location</u>	<u>Number</u>	<u>Observers</u>
Lark Bunting	--; 6/16	Pingree Park; Briggsdale	1; 423	DH; RAR
	7/30	Grand Lake	2	DJ; RT
	--	NE, SE Colo, Pueblo	high nos noted	vo
Savannah Sparrow	6/10, 17, 7/22; 7/7	NE and NC Colo; South Park	3, 5, 4; 12	vo; vo
	into July; --	Brush Creek; Arkansas V	same nos; 0	JM; CAC
Grasshopper Sparrow	6/2; --	Julesburg; Latilong 13	1; 1	JR; WG, SB
	--; 6/3	Arkansas Valley; Tamarack R	0; 3	CAC; JR
Vesper Sparrow	6/10 on; 6/7	NC Colo; Axial	31; n, 4 eggs	vo; D&JW
	--; 6/20	Durango; Lake Granby	3 y; 10-15	EF; DJ
Lark Sparrow	--	Foothills/Mountains	9 birds	FAC; VG; J&RW
	--	SE Colo	common	CAC
Cassin's Sparrow	6/2; 7/12	Julesburg; Hanover Pk	3; prob n	JR; EW
	--; --	Pueblo; Arkansas V	5 pr; 25+ pr	VT; CAC
Black-throated Sparrow	6/10, 18	Fowler, Crowley Co	pr nesting	D&CG
Gray-headed Junco	--	Intermountain Region	normal	vo
Chipping Sparrow	6/6 on; 6/3 on	W slope; E slope	35+; 70+	vo; vo
	7/11	Mesa de Mayo	25-30 pr, n, 3y	CAC
Brewer's Sparrow	6/2; --	Julesburg; NE Colo	2; numerous, 1n	JR; TO
	6/16, 7/1	nr Eagle	numerous, 1-2	JM
	6/17, 7/22	NE Colo	5, 2	vo
White-crowned Sparrow				
	very few reports of this common breeding bird, mostly from			
	very high elevations, 10,500+			
Lincoln's Sparrow	June/July	Estes Pk area; West Creek	ns; 2n	vo; vo
	7/28; --	Mt Evans; Endo Valley	5; many terr, y	vo; WKR

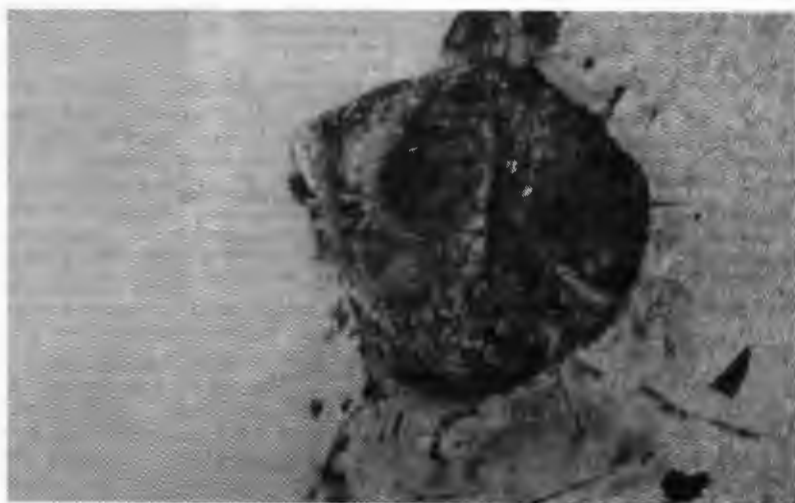
<u>Species</u>	<u>Date</u>	<u>Location</u>	<u>Number</u>	<u>Observers</u>
Song Sparrow				
few reports statewide: several single nests, 1 w/cowbird egg abandoned				vo
McCown's Longspur	6/2;6/17,--	Pawnee;NE Colo	6;20,2n	MM;vo,TO
Chestnut-collared Longspur	6/2;6/17,--	Pawnee;NE Colo	1;4,4n	MM;vo,TO

Initialed Observers and Contributors

David Binns DB	Eleanor MacDonald EM
Steve Bissell SB	Mike Manson MM
William and Sylvia Brockner W&SB	Ted and Lois Matthews T&LM
Courtney Buechert CB	Ann Means AM
Charles L. Campbell CLC	Jack Merchant JM
Pilk Carter PC	Gary Miller GM
Charles A. Chase, III CAC	Rusty Muller RM
Jean Christenson JC	Melvin Nail MN
Kevin Cook KC	Tom Olson TO
Garth Coombs GC	Curt Orde CO
Marion Dallemont MD	Ruth Osgood RO
Virginia Dionigi VD	Ruth Parkison RP
Patty Echelmeyer PE	Don and Esther Phillips D&EP
Robbie Elliott RE	Jack Reddall JR
Bill Ervin BE	Warner K. Reeser WKR
Margaret and Clark Ewing M&CE	Joe Rigli JRG
Vera Evanson VE	Richard and Dorothy Rosche R&DR
Elva Fox EF	Robert Rozinski RR
Richard Franz RF	Ron A. Ryder RAR
Vivian Gilbert VG	Chip Salaun, Jr. CS
Robert Glover RG	Phil Schaeffer PS
Mary Griest MG	Mary Jane Schock MJS
Walter Graul WG	Virgil Scott VS
Dave and Carolyn Griffiths D&CG	Judy Sisley JS
J. R. Guadagno JRG	Margaret Snyder MS
Carol Hack CH	Jerry Spangler JSP
Julie Hammerstrom JH	Marlow Speers MS
Ed and Camille Harper E&CH	Ted Swem TS
Carol Haverkamp CHK	John Thayer JT
Kathy Hawkins KH	Roger Trout RT
Dale Hein DH	Van Truan VT
Louise Hering LH	Ellen Valentine EV
Elsie Hoffman EH	Doug and Judy Ward D&JW
Truman Holtzclaw TH	Jim and Rosie Watts J&RW
Fern Huffsmith FH	Bruce Webb BW
Barbara and Sid Hyde B&SH	Bernice Weldon BWE
David Jasper DJ	Elinor Wills EW
Frank and Jan Justice F&JJ	Robertta Winn RW
Jack Kenyon JK	Foothills Audubon Club FAC
Hugh Kingery HK	Various Observers vo

Abbreviations

a	adult	GGSP	Golden Gate State Park
br	brood	im	immature
col	colony	n	nest
fam	family	nr	near
fl	flock	pr	pair
flg	fledged	RMNP	Rocky Mountain National Park
		V	Valley



Flammulated Owls Photographs by Bill Ervin

## SITE GUIDE TO BONNY RESERVOIR

by

Michael P. Moulton, Peter J. Moulton, Judd Sundine

## Introduction

Bonny Reservoir is an oasis of grossly disturbed, mesic habitats within an otherwise semi-arid environment in southern Yuma County, Colorado, on the Kansas state line. We use the term "disturbed" in the sense that the majority of habitats in this region are the product of human interference, and therefore are not representative of natural conditions. Forest habitats are abundant in the form of riparian woodland and shelterbelts. There are also cattail marshes, tall grass communities, sand-sage communities, short grass communities, and cropland.

Most of these habitats are newly developed and reflect the influence of human activity. The importance of Bison (Larson, 1940), drought (Tomanek and Hulett, 1970) and fire (Launchbaugh, 1972) in the development of the vegetation in the central Great Plains has been well documented. In lowlying areas on the Great Plains, there is a fourth major factor--flooding. In the spring of 1935, the importance of this factor was emphasized when a flood ravaged the South Republican River Valley (for a vivid description of the flood and the resultant devastation see The Burlington Record 6 June 1935). Photographs taken by the Bureau of Reclamation show that trees were scarce in the valley as recently as the late 1940s. Whether this absence of trees was the result of the flood is a moot point; the important consideration is that trees now present at Bonny Reservoir have grown during the last 30 years.

The influences of man in the area include the removal of Bison, manipulation of water for irrigation, protection from fire, and flood control, and these factors have all contributed to the overall disturbance of the region.

## Vegetation

Wooded sites in this region are essentially of two types: riparian woodland and shelter belts. Riparian woodland consists primarily of stands of plains cottonwoods (Populus sargentii) and willows (Salix spp.), whereas shelter belts include a variety of deciduous and coniferous species.

Tall grass communities are located in the west end of the area and immediately below the dam. In the west end these communities contain prairie cord grass (Spartina pectinata), sand reed grass (Calamovilfa longifolia), indian grass (Sorghastrum nutans), and big bluestem (Andropogon gerardii), whereas such communities below the dam consist mostly of indian grass, big bluestem, and switchgrass (Panicum virgatum).

Steep rocky slopes support bunch grass communities of little bluestem (Schizachyrium scoparium) and side-oats grama (Bouteloua

curtipendula). Other grassland communities include grazed and ungrazed sand sage and stands of short grass. Short grass communities in this region have been described by Sundine (1978).

Agricultural development of the region is evidenced by large areas of cultivated land. Corn and sorghum are the principal crops in lowlands areas, and wheat is the major crop on uplands. There are also several alfalfa fields, mostly below the dam.

#### Aquatic Habitat

The lake is the dominant feature of the area. It resulted from the construction of Bonny Dam in the early 1950s. Several ponds have been dug since that time, both above and below the dam. There is a large cattail marsh at the west end of the area, and other marshy areas exist in the vicinity of Hale Ponds.

The water level of the lake fluctuates, sometimes dramatically, particularly in spring and fall. Shorebird habitat therefore is transitory, being abundant at one time and virtually nonexistent at another.

#### Climate

Weather in this region is erratic and frequently defies prediction, no matter what the season. Winters generally are not characterized by heavy snowfall, but blizzards occasionally occur. There may be some warm days in winter at Bonny Reservoir, but birders who visit the area in winter should take the warmest clothes they own. Temperatures may not be as low as they are at higher elevations, but it's difficult to convince oneself that 10°F isn't really -50°F when the wind is blowing at 40 mph. Summers can be equally variable, with many days having high temperatures in the 80°-90°F range, whereas other days may have high temperatures well over 100°F.

Spring usually is characterized by warm days and cool nights. It never seems to be oppressively cold or hot, and birders have only the wind and occasional rain showers to contend with.

Fall is very much like spring in terms of temperature, but somewhat drier.

#### Camping

Excellent camping facilities are located at the Foster Grove, Wagon Wheel, and North Cove campgrounds. These campgrounds offer good drinking water, campsites, and some even have showers. The Colorado Division of Parks and Outdoor Recreation (CDPOR) maintains these campgrounds, and charges a fee for their use. Whether birders camp in one of these campgrounds or not, they will still need to purchase a Parks Pass. For more information on these fees contact the CDPOR.

Below the dam, approximately four miles east of Hale, Colorado, is the Hale Ponds Area. Camping here is free, although the price one pays



for camping at Hale Ponds is in time lost in distance traveled from birding 'hotspots' at the dam.

In spring and summer, insect repellent and calamine lotion or some such first aid cream might be useful. The area is blessed with an abundance of mosquitos, deer flies, ticks, chiggers, and a variety of bothersome "noseeums".

Gasoline and groceries are available in Idalia, Burlington, and Wray. There is also a general store in Hale, and during summer the concession stand near Wagon Wheel campground is open.

#### When to Visit Bonny Reservoir

Interesting species of birds may be seen at Bonny in any season but for the greatest number of species, birders should visit the region during spring and fall migrations. Much work needs to be done on the breeding birds.

#### Getting to Bonny Reservoir

From Denver there are two direct routes to Bonny Reservoir. Both start on I-70. The first route follows U.S. Hwy 36 from Byers to Idalia. From Idalia, drive east for two miles, then south on U.S. 385 until you see the signs.

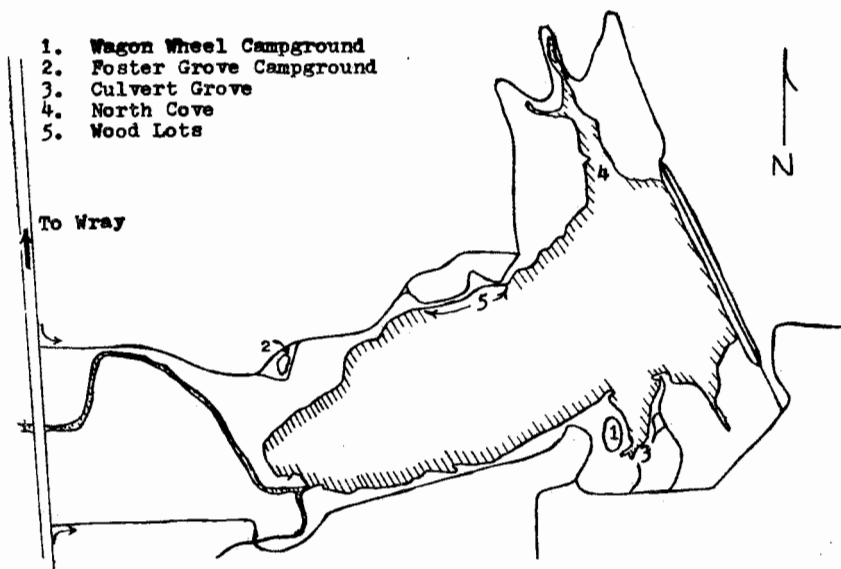
A second route is to continue on I-70 to Burlington and then drive north on U.S. 385 about 20 miles. This route is longer but offers the advantage of passing by Flagler State Recreation Area. This is an often overlooked area, but it's a good area for shorebirds during migration.

#### Literature Cited

- Larson, F. 1940. The role of bison in maintaining the short grass plains. *Ecology*, 21: 113-121.
- Launchbaugh, J.L. 1972. Effect of fire on shortgrass and mixed prairie species. *Proc. Ann. Tall Timbers Fire Ecol.*: 129-151.
- Sundine, J. 1978. Finding snowy owls in Yuma County. *C.F.O. Journal* No. 33. Spring 1978.: 21-22.
- Tomanek, G.W. and G.K. Hulett 1970. Effects of historical droughts on grassland vegetation in the central Great Plains. Pp. 203-210, in *Pleistocene and Recent environments of the central Great Plains* (W. Dort, Jr., and J.K. Jones, Jr., eds.), Univ. Press Kansas, 433 pp.

Birds To Look For

1. Wagon Wheel Campground - see number 3
2. Foster Grove Campground - Red-bellied Woodpecker - Bell's Vireo
3. Culvert Grove - Gray-cheeked Thrush and Warblers
4. North Cove - Warblers and Owls
5. Wood Lots - Warblers and Tanagers



# WESTERN BIRDS



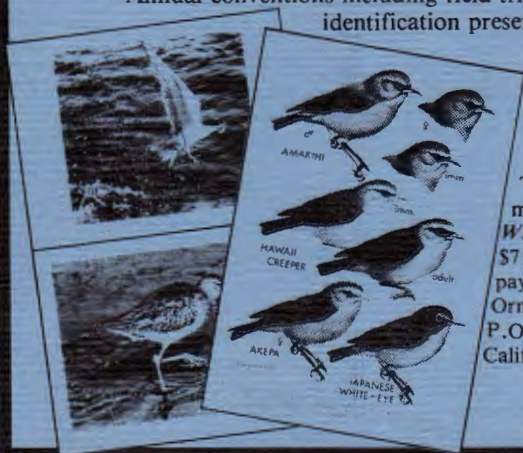
*A quarterly journal of field ornithology for active birders and professional ornithologists*

Why has **WESTERN BIRDS** become a must for serious field ornithologists?

- **Bird identification articles** written by experts and rigorously reviewed by editorial board
- **Generously illustrated** by leading amateur and professional artists and photographers
- Articles and photographs documenting **rarities** and **range extensions**
- **Studies** of bird distribution, abundance, behavior, migration and ecology

**WESTERN BIRDS** also announces:

- WFO sponsored **pelagic trips**
- Annual conventions including field trips and bird identification presentations



To become a WFO member and receive **WESTERN BIRDS** send \$7.50 annual dues payable to Western Field Ornithologists Inc., P.O. Box 595, Coronado, California 92118.

# COLORADO BIRD DISTRIBUTION LATILONG STUDY



Order from:

Judd Sundine, Treasurer  
Colorado Field Ornithologists  
5325 Garland  
Arvada, CO 80002

Make checks payable to C.F.O.  
Price: Still only \$2.00