



**LAMAR 2024**  
COLORADO FIELD ORNITHOLOGISTS CONVENTION

CFO Annual Convention  
Lamar, Colorado  
May 2-5, 2024

# Convention Information Packet

# Schedule

*The schedule is subject to change - all updates will be posted daily on the schedule at the Info Table in the Cow Palace Lobby.*

All activities take place at the Historic Cow Palace except the Welcome Picnic.

## Thursday, May 2, 2024

7:00 am - 4:00 pm	Pre-convention field trips	
5:30 pm - 8:00 pm	Welcome picnic w/ packet pick up Catering starts at 6 pm <i>see location directions below, don't follow Google/Maps directions</i>	Willow Creek Park
8:00 pm - 10:00 pm	Rail Field Trip	Lobby

## Friday, May 3, 2024

4:45 am - 5:45 am	Info Table w/ packet pick up	Lobby
5:00 am - 4:00 pm	Field trips (full & half day trips)	Lobby
5:00 am - 7:00 am	Breakfast/lunch pick up	Lobby
5:00 pm - 8:00 pm	Info Table w/ packet pick up	Lobby
5:30 pm - 7:30 pm	Social	Empire Room
5:30 pm - 7:30 pm	Silent Auction	Empire Room

## Saturday, May 4, 2024

4:45 am - 6:30 am	Info Table w/ packet pick up	Lobby
5:00 am - 12:00 pm	Field trips	Lobby
5:00 am - 7:00 am	Breakfast/lunch pick up	Lobby
1:00 pm - 4:00 pm	Silent Auction (last chance!)	Empire Room
1:00 pm - 2:30 pm	Scientific paper session	Empire Room
2:30 pm - 4:00 pm	Workshops	Empire Room
5:30 pm - 8:00 pm	Banquet & CFO Annual Meeting	Empire Room
8:00 pm - 8:30 pm	Silent Auction Payment/Pickup	Empire Room

## Sunday, May 5, 2024

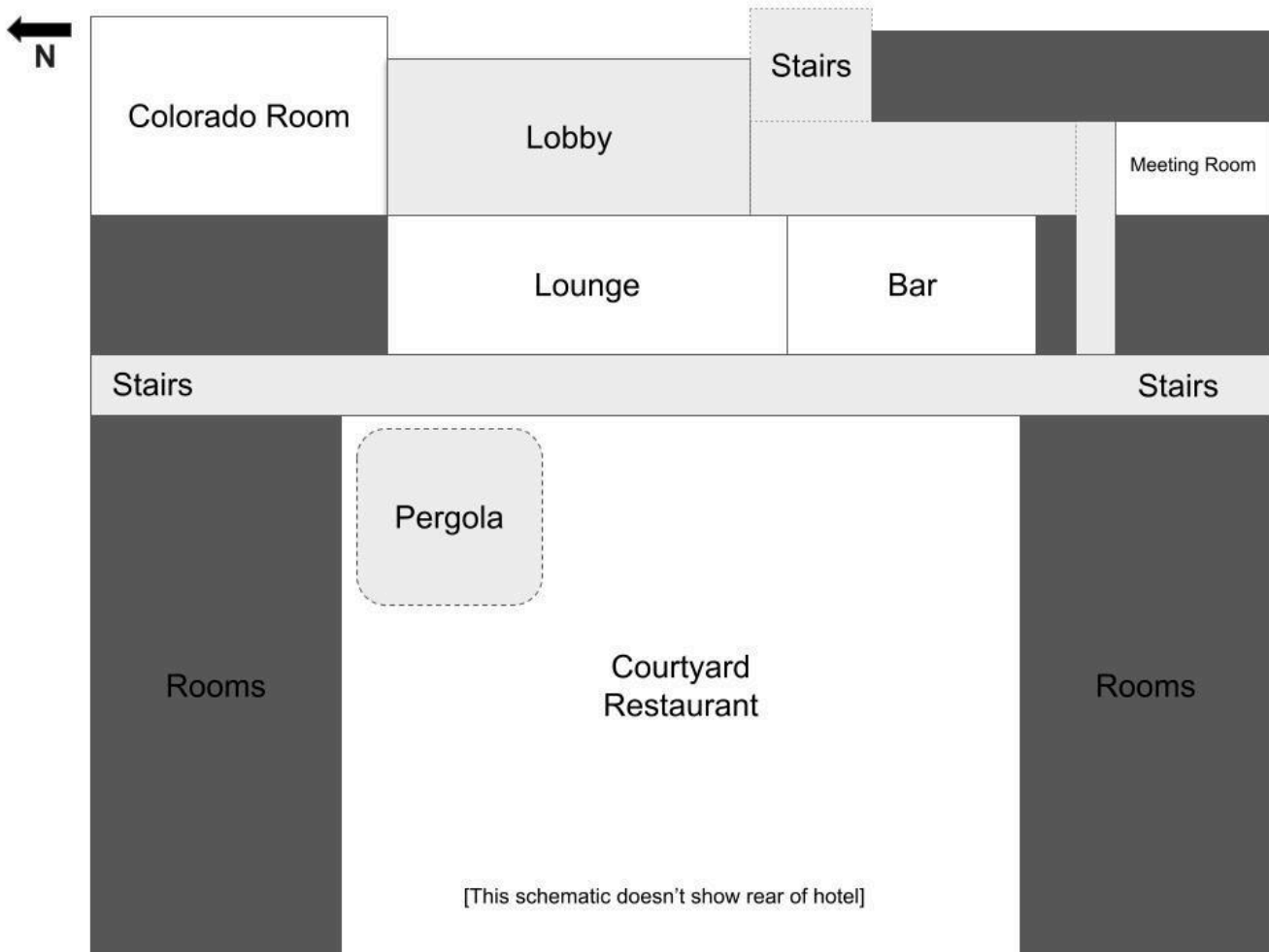
4:45 am - 6:30 am	Info Table	Lobby
5:00 am - 4:00 pm	Field trips (half & full day trips)	Lobby
5:00 am - 7:00 am	Breakfast/lunch pick up	Lobby
5:00 am - 6:30 am	Silent Auction Payment/Pickup	Empire Room

# Venue Locations

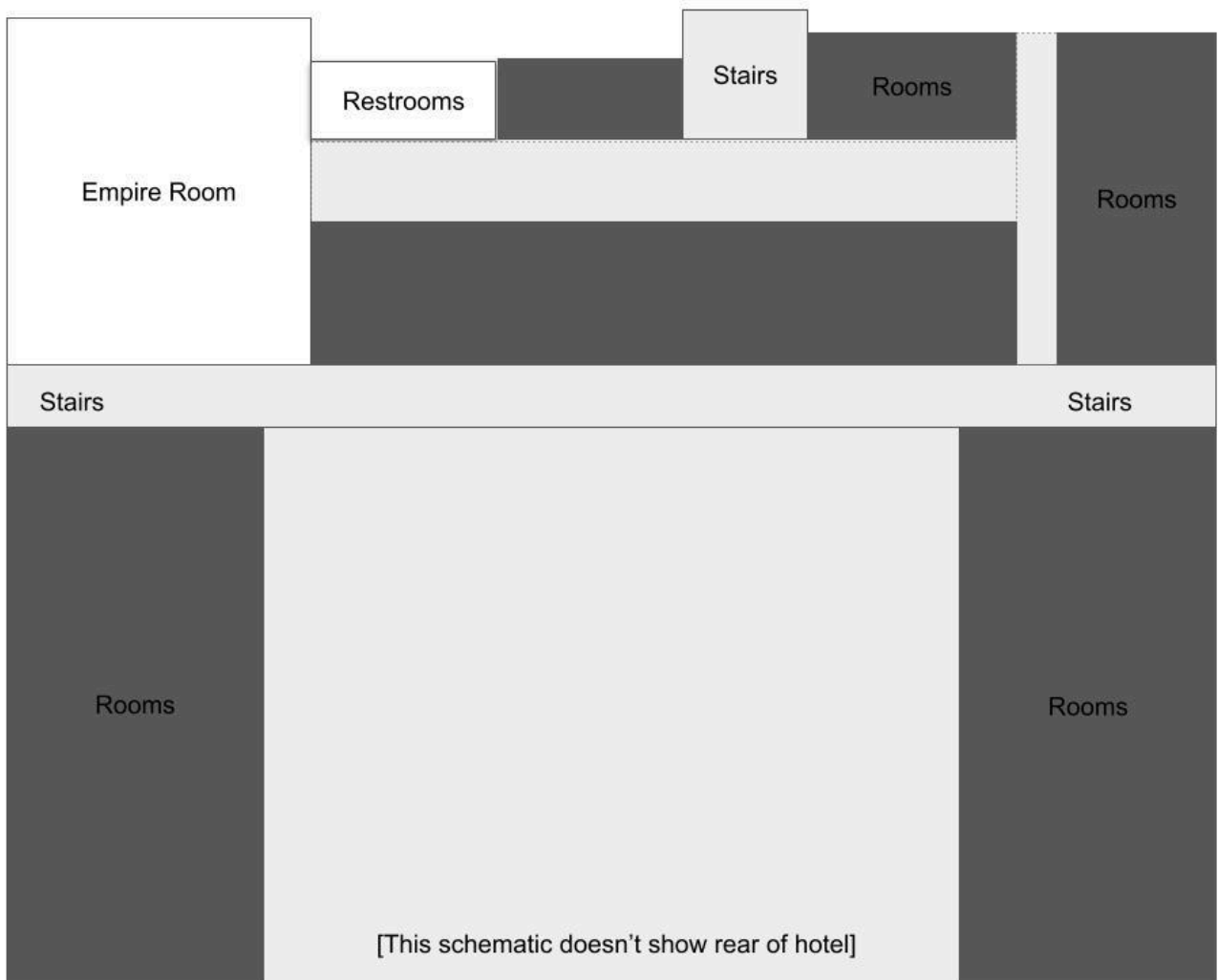
**Welcome Picnic:** Willow Creek Park Pavilion. Corner of Parkview Ave. & Parkway Dr.  
*IMPORTANT: The Welcome Picnic will be held at Willow Creek Park pavilions just south of the Lamar swimming pool. There is a gravel entry at the corner of Parkview Ave and Parkway Dr. **This is NOT where most mapping apps will direct you** to Willow Creek Park on Rotary Way. If you follow your app, you will end up on the wrong side of Willow Creek without access to the Welcome Picnic.*

**Convention Hotel:** Historic Cow Palace Inn. 1301 N. Main Street, Lamar, CO

## Cow Palace Floor 1



## Cow Palace Floor 2



## Community Booths

Five organizations will have booths at the convention: Arkansas Valley Audubon Society, Denver Audubon, Denver Field Ornithologists, Front Range Birding Company, and WildVida Expeditions. Stop by their tables in the lobby and the Colorado Room to learn more about these great groups.

## Convention Specials

If you didn't order a t-shirt or hat with your registration, a few will be for sale at the Info Table.



Revised 24 April 2024

# Silent Auction

Support student research and youth development while snagging yourself some new artwork! Items include bird feeder, framed and unframed prints, lithographs, photos, and original art by noted artists including Gould, Don Whitlatch, Sallie Ellington Middleton, Ray Harm, Richard Sloan, Thomas Mangelsen, and more! Preview some of the pieces on the webpage.

The silent auction is in the Empire Room at the Historic Cow Palace on Friday (5:30 – 7:30 pm) and Saturday (1:00 pm – 4:00 pm).

Learn more about CFO's [research grants and travel scholarships program](#).

# Banquet Keynote Address

Dallas May is our 2024 Keynote Speaker during the convention banquet. Several members of the May family will be in attendance at the banquet.

Dallas was born and raised in Colorado in a ranching and farming family. When he was young, he started a herd of purebred Limousin cattle from one heifer calf given to him by his grandpa on his thirteenth birthday. Today, he sells purebred breeding stock all over the United States and Mexico, and also operates an irrigated farm operation raising alfalfa and corn. His wife and three grown children and their spouses are actively involved in the operation.

As he was growing up, May watched most of the remaining ranches around them be converted to farmland. Seeing wildlife habitats disappear in order for families to find a way to survive economically had a profound impact on him. His lifelong quest to protect native grassland and wildlife habitat began and continues to shape his philosophy that farming, ranching, and the preservation of wildlife and associated habitats could coexist.

When Dallas was growing up, ranchers and farmers were on their own to achieve sustainability in supporting their families across generations and providing a dependable, affordable supply of food for the growing population, all the while protecting the environment that they loved and needed. If not for ranching and ranching families, very few if, any pristine native grasslands in the US would be intact today.

Today there are an extraordinary number of organizations and people seeking to form collaborations with ranches to achieve these important goals, yet economic pressures remain daunting.

Several years ago, Dallas May partnered with Colorado Cattlemen's Agricultural Land Trust, The Conservation Fund, The Nature Conservancy, Western Landowners Alliance, and several other groups to place a conservation easement on his ranch.

His desire has always been to conserve wildlife, wildlife habitats, water, property rights, working lands, and the ranching and farming families living here. The May Ranch strives to

maintain maximum diversity from the ground up and the family believes that an all-natural balance is important from the tiniest lifeforms in soil to the largest species of wildlife.

Dallas May is the chair of the Colorado Parks and Wildlife Commission, serves on several boards and committees associated with water issues to protect water rights, and has been recognized by many organizations for his and his family's conservation efforts.

## Food

All food (except the Welcome Picnic) needed to be pre-ordered with your registration.

### Welcome Picnic

A picnic burger bar (with a veggie burger option) with sides of chips and salad.

### Pre-ordered Breakfasts/Lunches

The Historic Cow Palace serves breakfast from 7:00 am - 10:00 am. Most convention field trips start before 7:00 am.

If you pre-ordered a breakfast, it is marked on your schedule in your convention packet. These are available for pick up starting at 5:00 am each morning in the lobby. We ask everyone to meet with your field trip group 15 minutes BEFORE the scheduled departure time – please pick up your breakfast/lunch BEFORE this. Exception: if your trip leaves at 5 or 5:15 am, please meet with your group to confirm carpooling and plans at 4:45/5:00 and **then** pick up your breakfast just before you depart. This will help us get all the trips started on time.

If you did not pre-order a breakfast or lunch, please bring sufficient food along on your trips to keep you happy and healthy.

### Banquet

The CFO Banquet and Annual Meeting is a ticketed event - indicated on your name tag. All banquet attendees chose a meal option during registration. These are listed in individual schedules.

**Fajita Taco Bar** - self-service, no specific meal ticket

Build your own pork or chicken tacos on flour tortillas. Top them with beans, mixed peppers and onions, sour cream, cheese, pico de gallo, guacamole, and Morita chile salsa.

**Butternut Squash Enchiladas (vegetarian); Veggie Linguine with Lemon Caper Cream Sauce (vegetarian); Chef's Choice (vegan); special dietary request**

Individuals who selected one of these meals will have a colored ticket for their meal in their convention packet. Please place this ticket at your place setting so the servers can see it. These meals are individually plated and will be served to the tables.

# Science Session

Saturday, May 4, 2024, Empire Room, The Historic Cow Palace

1:00 pm Short Talks

Sarah Albright, Colorado State University. *Occupancy, abundance, and productivity of Burrowing Owls nesting in eastern Colorado.*

Emily Macklin, South Dakota State University. *Impacts of woodland treatment and colony site selection of Pinyon Jays in Colorado.*

Caleb Park, Western Colorado University. *Investigating environmental drivers of Brewer's Sparrow Density in the Gunnison Basin: A spatiotemporal analysis of habitat characteristics.*

Chris Walker, University of Northern Colorado. *Changing colors: Using different color-measuring tools for avian coloration analysis.*

Philip McNichols, CFO Conservation Committee Chair. *Conservation Efforts for CFO including Pinyon Jays and the Conejos River Restoration Project.*

2:40 pm Break

2:50 pm Workshops

David Leatherman. *Impaled Prey of the Loggerhead Shrike in Southeastern Colorado.*

Chuck Hundertmark, CFO President. *From Next Door to the Texas Gulf Coast, Finding the Best Spots to Bird.*

## Abstracts

### **Sarah Albright; Colorado State University**

Co-Authors: William Kendall, USGS Colorado Cooperative Fish and Wildlife Unit; Reesa Conrey, Colorado Parks and Wildlife

**Title:** Occupancy, abundance, and productivity of Burrowing Owls nesting in eastern Colorado

**Abstract:** Burrowing Owl (*Athene cunicularia*) populations have been declining in regions across the Great Plains due to nesting habitat loss, degradation, and fragmentation. This decline has been closely linked to declines in black-tailed prairie dogs (*Cynomys ludovicianus*), which provide important nesting habitat for Burrowing Owls and other grassland birds. We examine the effect of black-tailed prairie dog colony attributes on burrowing owl occupancy and abundance. We specifically look at how colony size, activity status, and vegetation characteristics influence these population parameters on 175 survey plots throughout eastern Colorado across two sample years. Results are based on multistate occupancy and distance sampling data collected by paired observers traversing transects through study plots, during the 2022 and 2023 Burrowing Owl nesting seasons (May-August). Our top multistate occupancy model indicates that prairie dog colony activity level and latitude have significant effects on occupancy probabilities. Prairie dog activity level has a strong positive effect on the probability that a plot is occupied with successful reproduction. Occupancy was higher in southern CO compared to northern CO. Abundance and density estimates are calculated using distance sampling methods. This two-year study will provide an updated state status assessment of Burrowing Owl populations across the black-tailed prairie dog range in Colorado that will help calibrate Burrowing Owl population models incorporating prairie dog colony characteristics and inform future monitoring plans.

## **Emily Macklin; South Dakota State University**

Co-Authors: Amanda E. Cheeseman, South Dakota State University; David McNitt, Bureau of Land Management; Amy Seglund, Colorado Parks and Wildlife; Scott Somershoe, U.S. Fish and Wildlife Service

**Title:** Impacts of woodland treatment and colony site selection of Pinyon Jays in Colorado

**Abstract:** As the diverse landscape of the Intermountain West evolves with climate change impacts, land conversion, and habitat loss, many wildlife species face novel environmental conditions that may impact their fitness and use of resources. One such species of conservation interest is the Pinyon Jay (*Gymnorhinus cyanocephalus*), a highly social corvid endemic to the interior western United States. Pinyon Jay populations have experienced significant population declines over the last 50 years, resulting in their consideration for listing on the Endangered Species Act (ESA) and the elevation of their conservation status as a species of concern across multiple government agencies and organizations. Pinyon jays inhabit piñon-juniper and other dry conifer woodlands that are routinely treated for numerous management objectives, including wildfire mitigation through fuels reduction, forest health restoration, and habitat improvement for other species. The silvicultural methods and scale of treatment projects vary throughout the Pinyon Jay range, and regionally focused research is needed to understand the immediate and long-term impacts of woodland treatments on Pinyon Jay populations. We are currently evaluating the influence of woodland composition and scale on Pinyon Jay nesting site suitability across Colorado, as well as the impact of silvicultural prescriptions on relative superpopulation abundance and habitat use of Pinyon Jays during the breeding season. The results of this study will inform sustainable land management practices and provide guidance for future research efforts in Colorado to mitigate negative impacts on breeding Pinyon Jays and aid in vital recovery efforts for this imperiled species.

## **Caleb Park; Western Colorado University**

**Title:** Investigating environmental drivers of Brewer's Sparrow Density in the Gunnison Basin: A spatiotemporal analysis of habitat characteristics

**Abstract:** The Brewer's Sparrow (*Spizella breweri*), a sagebrush obligate bird, faces increasing threats due to habitat degradation. Given these persistent threats, it is crucial to understand relationships between the landscape and the animals that rely on it. This study aims to combine bird point count data with remotely sensed and field collected vegetative, topographic, and climatic covariates to determine the factors that most affect the species' distribution and quantify the relationship between spatial and temporal variables and Brewer's Sparrow abundance across the sagebrush ecosystem of the Gunnison Basin. To achieve this, I am conducting breeding season bird point counts, following the IMBCR protocol, from 2022 to 2024. Additionally, I am using previously collected data from 2018 to 2021 to assess the abundance and distribution of Brewer's sparrows across the Gunnison Basin over the six-year period. Remotely sensed vegetation and topographic data, including LiDAR, DEM, and high-resolution (0.5m) imagery of the Gunnison Basin collected in 2022, are being utilized to compare these spatial covariates with the distribution patterns of the Brewer's sparrow within the sagebrush steppe. Currently, remotely sensed vegetative data is still being acquired, while the 2024 bird point count data collection is scheduled to begin towards the end of May. Preliminary analysis of Brewer's Sparrow population numbers suggests similarities in fluctuations among distinct local populations (at the grid scale). Researching this complex relationship between the Brewer's Sparrow and its habitat will provide valuable insights for land managers, enabling them to implement more effective and beneficial management strategies for these species.



## **Chris Walker; University of Northern Colorado**

Co-Authors: Lauryn Benedict, University of Northern Colorado; Jan Chaloupka, University of Northern Colorado

**Title:** Changing colors: Using different color-measuring tools for avian coloration analysis

**Abstract:** Vibrantly colored birds of many hues can be found at every turn. Plumage colorations can be impacted by variables such as sexual selection, social signaling, and diet. An example of a diet-based pigment found in feathers are carotenoids, which provide warm hues including reds and oranges. Eating a carotenoid-rich diet can provide brighter colorations to birds with better access to resources or different resource types. These bright carotenoid-colored feathers can provide an evolutionary advantage for these birds; sexual competitions or dominance hierarchies outcomes can be determined through these colorations. Red-winged Blackbirds (*Agelaius phoeniceus*) are known for their red-orange epaulets. These are specifically used to signal dominance, health, and desirability by potential mates. Much research has been done on males, but females have historically been left out of analyses on coloration. In this study, I used photography and spectrometry techniques to compare male and female Red-winged Blackbird epaulet coloration. These two techniques have different advantages and disadvantages, including monetary cost, amount of data collection (pinpoint data versus whole area data), application access, and more. The goal of this research is to analyze the differences in the results from each testing type; this will have implications for how these tools should be used in a field study. If they yield similar results, the preferential tool can be utilized in future studies. If they yield different results, we will analyze what may be causing these differences so that we can trust our tools to be reliable in future studies of wild birds.

## **Philip McNichols, CFO Conservation Committee Chair**

**Title:** CFO Conservation efforts including Pinyon Jays and the Conejos River Restoration Project

**Abstract:** CFO conservation efforts increased in the past year with involvement in several projects and engagement with other like-minded organizations. Community outreach and engagement included supporting bird species, habitats, legislation, and pollinators. As Roger Tory Peterson said, “birds are the litmus paper of our society” and at CFO we will continue to play our part. Adding to the prior presentation by Emily Macklin, CFO’s very successful involvement in the ongoing Pinyon Jay Community Science Project will be discussed. Our newest project, the Conejos River Restoration Project, will also be introduced. The focus of this work is enhancing the river and the surrounding riparian area. Special focus is on the Southwestern Willow Flycatcher and the Western Yellow-billed Cuckoo.

Philip McNichols is also a member of the CPW Wildlife and Habitat Roundtable, Partners in the Outdoors, and on the conservation committee of Boulder County Nature Association

## David Leatherman

**Title:** Impaled Prey of the Loggerhead Shrike in Southeastern Colorado

Description: The Loggerhead Shrike (*Lanius ludovicianus*), the only breeding predatory songbird in Colorado, is known for its habit of impaling prey on thorns, in branch crotches, and on barbed wire. Its documented reasons for impaling are holding/storing prey and mate recruitment. This workshop will illustrate via photographs taken over the last few decades the varied diet of loggerhead shrikes in southeastern Colorado as evidenced by impaled prey. Some of these items are surprising, some break federal law. We will also discuss other unproven reasons for impaling such as messaging to other birds.

David Leatherman is a former entomologist with Colorado State Forest Service, a former CFO Journal Editor, and author of the *Colorado Birds* column titled “The Hungry Bird.”

## Chuck Hundertmark; CFO President

**Title:** From Next Door to the Texas Gulf Coast, Finding the Best Spots to Bird

Description: Since the 1950s, birders have used bird-finding guides to help plan their birding trips. With the emergence of eBird, many birders have started using that application to find popular “hotspots”. But the eBird hotspot maps don’t provide directions to each hotspot. Now there’s a new website that provides directions and more information about every eBird hotspot in 38 states and more.

In this workshop, we’ll walk through the ways [birdinghotspots.org](http://birdinghotspots.org) can help you plan your birding trips in Colorado, most other states, and in a growing number of other countries. We’ll explore the ways the website links directly to eBird. The website can also be accessed through [CFO’s County Birding pages](#). Finally, we’ll explore how all of us can help grow and improve the website providing us new challenges and helping other birders.

# Field Trip Descriptions

All field trips will meet in the lobby of the Cow Palace Hotel. **Please arrive to meet your group 15 minutes prior to the departure time.** Make sure you have picked up or packed your breakfast and/or lunch before meeting your group (except for departures at 5 and 5:15 am, please meet your group then pick up your meal).

Plan for the carpool group to reimburse the driver at the rate of 50 cents per mile. The cost is divided among the passengers and the driver is included in the calculations when figuring out the per person costs. Trip mileage in the descriptions is approximate and is intended to give participants an idea of how much driving there is likely to be.

# Arrival Trips

## **\*\*Full\*\* TH1 Arrival Trip from the Northern Front Range – Easy – Full Day**

Kyle Carlsen

7:00 am – 4:00 pm

## **TH5 Arrival Trip from the Northern Front Range – Easy – Full Day**

Nick Komar

7:00 am – 4:00 pm

Trip leader will contact everyone to determine where to meet. We will be birding hotspots on the way to Lamar. Please bring your lunch.

## **TH2 Arrival Trip from Colorado Springs Area – Easy – Full Day**

Diana Beatty & Jenyva Turner

7:00 am – 4:00 pm

Trip leader will contact everyone to determine where to meet. We will be birding hotspots on the way to Lamar. Please bring your lunch.

## **TH3 Welcoming Locals to Birding in Lamar – Willow Creek Park – Easy**

Helen Butts, Joanna Clark, Megan Jones Patterson, Travis Walker 2:00 pm – 4:00 pm

Welcome local developing birders with your extra binoculars and scopes to share. We will have a mellow viewing of this spring's migration at Willow Creek. Mississippi Kites and migrant songbirds are expected and we hope to introduce birding and CFO to some local residents in the southeast. White-eyed and Cassin's Vireos, Cape May, Blackpoll and other warblers are possible. Check for eastern species such as Northern Cardinals or Red-bellied Woodpecker – spring could have many possibilities.

# Evening Trip – Thursday Only

## **TH4 Rails in the Dark – Easy – Evening**

Sue Riffe, Debbie Barnes, Peter Burke & Scott Shaum

8:00 pm – 10:00 pm

We will try for Black Rail, Virginia Rail, and Sora. In addition, you never know what birds might be migrating through the marsh. The Black Rail is a federally threatened species under the Endangered Species Act of 1973. We will all drive out to the same marsh together; carpooling is a must as there is limited parking. All parking will be on the same side of the road, no door slamming, all lights extinguished and no talking once arriving at our destination. We will walk a half mile in the dark. Only the leaders will be talking. Cupping your ears and concentrated listening will be required as the rails may be on the other side of the marsh. Call playback can be considered a form of harassment and will not be used. We will rely on listening for spontaneously calling birds and will not use flashlights to see these birds.

This trip is only offered on Thursday.

Approximately 50 miles round trip.

# Friday Trips

## **\*\*FULL\*\* FR1 Carrizo & Cottonwood Canyon & Comanche National Grasslands – Moderate to Difficult – Full Day**

Chuck Hundertmark & Gary Witt

5:15 am – 4:00 pm

Located in Baca County, this trip will include canyons, grasslands, pinyon/juniper, riparian, and cactus, providing incredibly diverse habitats with a mix of western, eastern and southern species—and great migrant opportunities. Chihuahuan Raven, Curve-billed Thrasher, Bewick's and Canyon Wren, Canyon Towhee, Rufous-crowned Sparrow, Ash-throated Flycatcher, Eastern Phoebe, Ladder-backed Woodpecker, Cassin's Kingbird, may cross paths with Long-billed Curlew, Painted Bunting and any number of exciting migrants including an impressive array of sparrows. Big-horned sheep, elk and mountain lions are also all possible—and not just through their depictions in the petroglyphs. This trip may also stop at Blue Rose Ranch on the way.

This trip is offered on Friday and Sunday.

Approximately 180 miles round trip.

## **FR2 Picture Canyon – Moderate (due to potential heat) – Full Day**

Linda Lee, Linda Hodges & Diana Beatty

5:30 am – 4:00 pm

Journey to the southern reaches of the state and back in time as we explore canyon birds and famous rock art at Picture Canyon. Target species include Rock Wren, Scaled Quail, Ladder-backed Woodpecker, Canyon Towhee, Rufous-crowned Sparrow, and Blue Grosbeak. It can get hot down there, so plan to bring plenty of water and shade. Trip leaders may make stops at Two Buttes or other spots along the way to and from the canyon. Vault toilet at the canyon.

This trip is offered on Friday and Sunday.

Approximately 200 miles round trip.

## **FR3 Baca County SWAs – Moderate – Full Day**

Debbie Barnes Shankster & Joanna Clark

5:45 am – 4:00 pm

We'll make a loop to Turks Pond, Burchfield, and Two Buttes State Wildlife Areas, located in Baca County east of Highway 385 and containing a variety of habitats. We'll start at Turks Pond and Burchfield SWAs, two smaller areas that offer interesting potential for waterfowl and shorebirds, depending on water level, as well as migrating passerines. We'll aim to arrive at Two Buttes SWA around 11 a.m. Above the dam is the reservoir which is lined with cottonwood and rimrock. Below the dam are tall trees, marshy ponds, and areas of grass. Potential target species are Ash-throated Flycatcher, Black-and-White Warbler, Mountain Plover, Summer Tanager, and Western Screech Owl. High clearance vehicles are recommended due the nature of the roads, especially if there has been recent rainfall. A vault toilet is at the Lower Dam section. Gobblers Knob Rest Area is about 20 minutes to the northwest.

This trip is offered on Friday (full day), Saturday (half day), and Sunday (full day).

Approximately 75 miles round trip.

#### **FR4 Lake Hasty & Environs – Easy – Full Day**

Edward Landi & David Wade

5:00 am – 4:00 pm

Lake Hasty sits below the dam of John Martin Reservoir and offers amazing opportunities to see waterfowl and migrants. The Lake Hasty Campground is shielded by a grove of tall trees and offers a wonderful place for resting migrants. Join us for a day of birding where we will begin the morning leisurely walking among the trees in the Lake Hasty Campground looking and listening for migrants. Next, we will scope Lake Hasty for waterfowl, mixed flocks of swallows, and other interesting waterbirds. We will spend the afternoon exploring the northwest shore of John Martin Reservoir for any migrating shorebirds and waterfowl. This shoreline offers more opportunities to bird amongst groves of trees for migrants along dirt roads.

*State Park pass/fee is required for the drivers.*

This trip is offered on Friday (full day) and Sunday (half day).

Approximately 50 miles round trip.

#### **\*\*FULL\*\* FR5 John Martin Reservoir and the Arkansas River Valley – Moderate – Full Day**

Duane Nelson & Don Marsh

5:00 am – 4:00 pm

The Arkansas River, the sixth longest in the United States, and its valley provide us plenty of fantastic birding spots to explore. The vast array of riparian areas, quiet wooded lots and marshes provide days of exploring. Destinations include John Martin Reservoir for Piping Plover and Least Terns. Other spots could include Van's Grove, Van's Marsh, Wood Thrush Grove, Fort Lyons Wildlife Easement and Lake Hasty Campground. Migrants, migrants, and even more migrants will be the targets for the day. Expect to walk around a bit at each location so a day pack might be useful.

*State Park pass/fee is required for the drivers.*

This trip is offered on Friday (full day) and Saturday (half day).

Approximately 75 miles round trip.

#### **\*\*FULL\*\* FR6 Thurston Reservoir, Melody Tempel Grove, and Queens Reservoirs – Moderate – Full Day**

Kathy Kay & Nick Komar

5:15 am – 4:00 pm

Melody Tempel Grove, about 20 minutes north of Lamar, has an amazing tree-lined canal that attracts migrants galore. Expected species include Bullock's and Orchard Orioles, migrating warblers and thrushes, Olive-sided Flycatcher, and much more. Neenoshe is the largest reservoir of the Great Plains Reservoirs. Located approximately 28 minutes to the northeast of Lamar and east of Highway 287, it is surrounded by short grass prairie. Potential target species are Black Tern, Dunlin, Snowy Plover, Whimbrel, White-rumped Sandpiper, and Burrowing Owls. Two vault toilets are available. There is very little shade.

This trip is offered on Friday and Sunday.

Approximately 50 miles round trip.

**FR7 Rocky Ford SWA, the Lakes of Otero County, Bent's Old Fort – Moderate – Full Day**

Sue Riffe

5:15 am – 4:00 pm

It is all about the Arkansas River at Rocky Ford SWA. This is a good spot for migrating land birds and is the westernmost location where Northern Bobwhite may be heard calling from the thickets. Paths wander through sunny meadows and shaded woods along the riparian corridor, revealing all the usual suspects. Expect to walk a couple of miles here. Keep an eye out for Mississippi Kite, buntings, cardinals and warblers. Other places we will visit include Lakes Holbrook and Cheraw, shallow reservoirs that are terrific for migrating shorebirds and waterfowl. Our targets here are double-digit shorebirds species, including Snowy Plovers. Walking for 2-3 hours along riparian areas. In the cattail marsh, Yellow-headed Blackbirds, rails, Great-tailed Grackle, Common Yellowthroat and other warblers are possible.

This trip is offered on Friday (full day), Saturday (half day) and Sunday (half day).

Approximately 160 miles round trip.

**FR8 Picket Wire Canyonlands – Difficult – Full Day**

Kyle Carlsen & Helen Butts

5:15 am – 4:00 pm

Permanent water, pinyon, cholla, saltbush, and cottonwoods create a great habitat for southeast specialties. Likely possibilities include Rock and Bewick's Wrens, Ladder-backed Woodpecker, Cassin's Kingbird, Canyon Wren, Curve-billed Thrasher and Rufous-crowned Sparrow and, occasionally, Greater Roadrunner. Once the track turns towards the Purgatoire River, summer breeders include Lewis's Woodpecker, Yellow-breasted Chat, Black-throated Sparrow, Golden Eagle, Scaled Quail, Rufous-crowned Sparrow and Eastern Phoebe. Participants can expect lots of walking, some of which is steep and uneven with limited shade. If time allows, a short side quest to nearby Higbee ought to be possible.

This trip is offered on Friday and Sunday.

Approximately 180 miles round trip.

**\*\*FULL\*\* FR9 Higbee and Purgatoire River Valley – Difficult – Full Day**

Scott Shaum & John Haycraft

5:15 am – 4:00 pm

The Purgatoire River provides lush riparian habitat through arid pinyon-juniper canyonlands south of La Junta. Many species that are usually found further south can be seen in small numbers in this area. Patience is required but should pay off for a fantastic day list! Locations include Higbee Cemetery, Higbee Valley Road and along the river. Here we will hike about three miles on an uneven trail. Targets include Ladder-backed Woodpecker, Scaled Quail, Greater Roadrunner, Black Phoebe, Juniper Titmouse, Curve-billed Thrasher, Summer Tanager and Rufous-crowned Sparrow. The area around Higbee has attracted numerous rarities in the past including nesting Vermilion Flycatcher, Painted Bunting, Black-throated Sparrow and Zone-tailed Hawk. Hepatic Tanagers breed nearby as well.

Approximately 160 miles round trip.

### **FR10 Migration Hotspots of Lamar – Moderate – Full Day**

Megan Jones Patterson & Joel Such

5:00 am – 4:00 pm

Lake Hasty Campground, Melody Tempel Grove, Lamar Community College and Willow Creek Park are our destinations for this adventure. We are looking for passerines that are migrating north to their breeding grounds and the eastern species that stray too far west from the Central Flyway. Anything is possible. Expect walking, standing, listening, and waiting to get on the birds for this field trip. What do all these locations have in common? They all have water, deciduous trees, shrubs, and thick undergrowth.

*State Park pass/fee is required for the drivers.*

This trip is offered on Friday (full day), Saturday (half day) and Sunday (half day).

Approximately 50 miles round trip.

### **\*\*FULL\*\* FR11 May Ranch Keynote Speaker Trip – Moderate – Full Day**

Philip McNichols & Peter Burke

5:30 am – 4:00 pm

Discover the 4,500 acres of high sage and sandy creek-bottom country that is both a sustainable conservation ranch and a renowned wildlife habitat. Owners Dallas May, a Colorado Parks & Wildlife commissioner, and his wife Brenda, an appointee to the board of Great Outdoors Colorado, work hard to support beaver dams that turn high plains water trickles into wetlands, which turn grasses into rushes and shade trees and aged cottonwoods good for nesting—even after an April 2022 fire destroyed thousands of acres. Intelligent and integrated ranching continues to bring back healthy foliage and wetlands as well as earning May Ranch the coveted Audubon Society endorsement as a bird-friendly place to raise beef. In addition to beavers and endangered black-footed ferrets, the May Ranch supports western and eastern plains species with a creek that forms ponds and wetlands.

This trip is offered on Friday & Sunday (full day) and Saturday (half day).

Approximately 60 miles round trip.

### **\*\*FULL\*\* FR12 Elkhart, Kansas and Cimarron National Grasslands – Point of Rocks – Moderate – Full Day**

Laura Steadman, Megan Miller, & Melissa Mezger

5:15 am – 4:00 pm

Elkhart, Kansas is our southern destination on this trip. We'll bird our way through Kansas as we drive about 2 hours southeast of Lamar. Possible species in the Elkhart area include Broad-winged Hawk, Hooded Warbler, Magnolia Warbler, and Veery. We'll likely spend some time in the Cimarron National Grasslands at Point of Rocks, where we hope to find species such as Bell's Vireo, Great Crested Flycatcher, Rufous-crowned Sparrow, and Upland Sandpiper. Expect hot temperatures, lots of sun, and plenty of fun on this trip.

Approximately 250 miles round trip.

**\*\*CANCELED\*\* FR13 Big Sit – Melody Tempel Grove – Easy – Half Day**

Peter Gent

7:00 am – 11:30 am.

## Saturday Trips

*All trips will have you back at the convention headquarters in time for the science sessions at 1:00 pm on Saturday.*

**\*\*CANCELED\*\* SA1 Big Sit – Lake Hasty – Easy – Half Day**

Megan Jones Patterson

5:45 am – 11:00 am

**SA2 Big Sit – Melody Tempel Grove – Easy – Half Day**

Linda Lee & Crystal Reser

7:00 am – 11:30 am

For this trip, we'll be mostly stationary! A "big sit" is when we stay in one place to observe the birds more deeply, and watch what shows up once they're comfortable with us being there. Melody Tempel Grove, about 20 minutes north of Lamar, has an amazing tree-lined canal that attracts migrants galore. Expected species include Bullock's and Orchard Orioles, migrating warblers and thrushes, Olive-sided Flycatcher, and much more. Bring your camp chair and have a seat, or take a leisurely stroll along the canal.

This trip is offered on Friday and Saturday.

Approximately 35 miles round trip.

**SA3 Wiley Town – Easy – Half Day**

Travis Walker & Michelle Puplava

7:00 am – 11:00 am

Experience birding in small-town southeastern Colorado with a visit to Wiley, just 11 miles northwest of Lamar off of Highway 287. We'll start watching birds at Main Street Park and Harald Smith Park, and take a stroll around town. Main Street is a hotspot for Mississippi Kite. Hummingbird and oriole feeders will be available for relaxed viewing from a home next to Main Street Park with Black-chinned Hummingbird and Bullock's Oriole, Ruby-throated and Broad-tailed Hummingbirds are possible. Other likely spring migrants include Lazuli and Indigo Bunting, Rose-breasted and Black-headed Grosbeak, along with Yellow, Yellow-rumped, and Wilson's Warblers. Bring a chair if you'd like to watch from one of the parks or the bird feeders.

Approximately 22 miles round trip.

**\*\*FULL\*\* SA4 Migration Hotspots of Lamar – Easy – Half Day**

Dave Leatherman & Joanna Clark

5:30 am – 12:00 pm

Join the expert on the foods of Colorado Birds, Dave Leatherman for birding at Lamar Community College, local cemeteries and other hotspots. We are looking for passerines that are migrating north to their breeding grounds and the eastern species that stray too far west from the Central Flyway. Anything is possible. Expect walking, standing, listening, and waiting to get on the birds for this field trip.

This trip is offered on Friday (full day), Saturday (half day) and Sunday (half day).

Approximately 15 miles round trip.

Revised 24 April 2024



**\*\*FULL\*\* SA5 May Ranch–Keynote Speaker Trip – Moderate – Half Day**

Sue Riffe & Gary Witt

5:30 am – 12:00 pm

Discover the 4,500 acres of high sage and sandy creek-bottom country that is both a sustainable conservation ranch and a renowned wildlife habitat. Owners Dallas May, a Colorado Parks & Wildlife commissioner, and his wife Brenda, an appointee to the board of Great Outdoors Colorado, work hard to support beaver dams that turn high plains water trickles into wetlands, which turn grasses into rushes and shade trees and aged cottonwoods good for nesting—even after an April 2022 fire destroyed thousands of acres. Intelligent and integrated ranching continues to bring back healthy foliage and wetlands as well as earning May Ranch the coveted Audubon Society endorsement as a bird-friendly place to raise beef. In addition to beavers and endangered black-footed ferrets, the May Ranch supports western and eastern plains species with a creek that forms ponds and wetlands.

This trip is offered on Friday & Sunday (full day) and Saturday (half day).

Approximately 35 miles round trip.

**\*\*FULL\*\* SA6 East of Lamar – Easy – Half Day**

Brandon Percival

5:15 am – 12:00 pm

This trip will explore environs east of Lamar. Stops will include places such as Granada, the Amache Japanese-American Internment Camp National Historic Site, the famed migrant trap at Holly Rest Area, and likely a dip over the state line into Kansas. Other stops along US Rt 400 are likely. Target species include migrating warblers, shrikes, orioles and much much more!

Approximately 70-120 miles round trip.

**\*\*FULL\*\* SA7 Kiowa/Bent (Kiowa Creek Wetlands), Adobe Creek/Blue Reservoir & Raven Lane – Easy – Half Day**

Debbie Barnes & Nick Komar

5:15 am – 12:00 pm

This trek will take you from short-grass prairie to reservoirs with all of the migration possibilities in between. Depending on which reservoirs have the right levels of water and where the shorebirds are—we could have mountain or piping plovers, least terns, or any shorebirds. In the prairies we could have Long-billed Curlews, Burrowing Owls, Scaled Quail, and Cassin's, Lark, or Grasshopper Sparrows to enrich your Kiowa county list! Bring your scope!

Approximately 80 miles round trip.

**SA8 Baca County SWAs – Moderate – Half Day**

Don Marsh & Joel Such

5:15 am – 12:00 pm

We'll make a loop to Turks Pond, Burchfield, and Two Buttes State Wildlife Areas, located in Baca County east of Highway 385 and containing a variety of habitats. We'll start at Turks Pond and Burchfield SWAs, two smaller areas that offer interesting potential for waterfowl and shorebirds, depending on water level, as well as migrating passerines. We'll aim to arrive at Two Buttes SWA around 11 a.m. Above the dam is the reservoir which is lined with cottonwood and rimrock. Below the dam are tall trees, marshy ponds, and areas of grass. Potential target species are Ash-throated Flycatcher, Black-and-White Warbler, Mountain Plover, Summer Tanager, and Western Screech Owl. High clearance vehicles are recommended due the nature of the roads, especially if there has been recent rainfall. A vault toilet is at the Two Buttes Lower Dam section. Gobblers Knob Rest Area is about 20 minutes to the northwest.

Revised 24 April 2024

This trip is offered on Friday (full day), Saturday (half day), and Sunday (full day).

Approximately 75 miles round trip.

## **SA9 The Lakes of Otero County & Bent's Old Fort – Moderate – Half Day**

Van Truan & Laura Steadman

5:15 am – 12:00 pm

These lakes are a good spot for migrating land birds. Paths wander through sunny meadows and shaded woods along the riparian corridor, revealing all the usual suspects. Expect to walk a couple of miles. Keep an eye out for Mississippi Kite, buntings, cardinals and warblers. Other places we will visit include Lakes Holbrook and Cheraw, shallow reservoirs that are terrific for migrating shorebirds and waterfowl. Our targets here are double-digit shorebirds species, including Snowy Plovers. Some walking, 2-3 hours along riparian areas. Cattail marsh: Yellow-headed Blackbirds, rails, Great-tailed Grackle, Common Yellowthroat.

This trip is offered on Friday (full day), Saturday (half day) and Sunday (half day).

Approximately 160 miles round trip.

## **\*\*FULL\*\* SA10 John Martin and the Arkansas River Valley – Moderate – Half Day**

John Drummond & John Haycraft

5:15 am – 12:00 pm

The Arkansas River, the sixth longest in the United States, and the valley provides us with plenty of fantastic birding spots to explore. The vast array of riparian areas, quiet wooded lots and marshes provide days of exploring. We have picked the best for you. Destinations include Van's Grove, Van's Marsh, Wood Thrush Grove, Fort Lyons Wildlife Easement and Hasty Campground. Migrants, migrants, and even more migrants will be the targets for the day. Expect to walk around a bit at each location so a small day pack might be useful. The final spot is John Martin Reservoir State Park. Piping Plovers and Least Terns have bred here in the past so keep an eye out.

*State Park pass/fee is required for the drivers.*

This trip is offered on Friday (full day) and Saturday (half day).

Approximately 75 miles round trip.

## **SA11 Lake Hasty – Easy – Half Day**

Edward Landi

4:30 am – 12:00 pm

This trip has an early start for some potential owling. We'll spend the bulk of our time around Lake Hasty, which sits below the dam of John Martin and offers amazing opportunities to see waterfowl and migrants. The Lake Hasty Campground is shielded by a grove of tall trees and offers a wonderful place for resting migrants. We'll survey the trees in the Lake Hasty Campground for migrants. Next, we will scope Lake Hasty for waterfowl, mixed flocks of swallows, and other interesting waterbirds. We will spend any remaining time exploring the northwest shore of John Martin Reservoir for any migrating shorebirds and waterfowl. This shoreline offers more opportunities to bird amongst groves of trees for migrants along dirt roads. **IMPORTANT: This trip leaves BEFORE pick-up breakfast/lunches will be ready. If you go on this trip, do not purchase Saturday pick-up breakfasts/lunches. You must bring your own.**

*State Park pass/fee is required for the drivers.*

Approximately 50 miles round trip.

**SA12 The Best of Lake Hasty & John Martin – Easy – Half Day**

Peter Burke & Owen Robertson

6:30 am – 12:00 pm

Lake Hasty sits below the dam of John Martin and offers amazing opportunities to see waterfowl and migrants. The Lake Hasty Campground is shielded by a grove of tall trees and offers a wonderful place for resting migrants. Join us for a day of birding where we will begin the morning leisurely walking among the trees in the Lake Hasty Campground for migrants. Next, we will scope Lake Hasty for waterfowl, mixed flocks of swallows, and other interesting waterbirds. We will spend any remaining time exploring the northwest shore of John Martin Reservoir for any migrating shorebirds and waterfowl. This shoreline offers more opportunities to bird amongst groves of trees for migrants along dirt roads.

*State Park pass/fee is required for the drivers.*

Approximately 50 miles round trip.

**\*\*FULL\*\* SA13 Heartland Ranch Nature Preserve with Southern Plains Land Trust – Moderate – Half Day**

Diana Beatty

5:00 am – 12:00 pm

This field trip will travel to southern Bent County to visit the Heartland Ranch Nature Preserve. With 47,000 acres available for us to explore, we certainly won't be able to see it all! This protected refuge is home to many prairie bird species from Horned Larks to Burrowing Owls, sparrows, kingbirds, ducks, raptors, and more. Non-bird wildlife includes prairie dogs, badgers, pronghorn, and bison! Southern Plains Land Trust Director, Dr. Henry Pollack, plans to accompany the group, so this is truly an "insiders" tour of this special place.

This trip is offered Saturday (half-day) and Sunday (half-day).

Approximately 75-100 miles round trip.

## Sunday Half Day Trips

**SU1 Loggerhead Shrikes–Befriending the Butcherbird – Moderate – Half Day**

Dave Leatherman

5:15 am – 12:00 pm

Join a trip with author of the CFO's Hungry Bird, Dave Leatherman, to focus on finding impaled prey of Loggerhead Shrikes. We will head to proven, productive, scouted spots including along Bent CR JJ west of Hasty and north of John Martin Reservoir.

*State Park pass/fee is required for the drivers.*

Approximately 50 miles round trip.

## **SU2 Lake Hasty & Environs – Easy – Half Day**

Debbie Barnes & Edward Landi

5:00 am – 12:00 pm

Lake Hasty sits below the dam of John Martin and offers amazing opportunities to see waterfowl and migrants. The Lake Hasty campground is shielded by a grove of tall trees and offers a wonderful place for resting migrants. Join us for a day of birding where we will begin the morning leisurely among the trees in the Lake Hasty campground for migrants. Next, we will scope Lake Hasty for waterfowl, mixed flocks of swallows, and other interesting waterbirds. We will spend the afternoon exploring the North West shore of John Martin Reservoir for any migrating shorebirds and waterfowl. This shoreline offers more opportunities to bird amongst groves of trees for migrants along dirt roads.

*State Park pass/fee is required for the drivers.*

This trip is offered on Friday (full day) and Sunday (half day).

Approximately 60 miles round trip.

## **su3 Rocky Ford SWA, the Lakes of Otero County, Bent's Old Fort – Moderate – Half Day**

Michelle Puplava & Melissa Mezger

5:15 am – 2:00 pm

It is all about the Arkansas River at Rocky Ford SWA. This is a good spot for migrating land birds and is the westernmost location where Northern Bobwhite may be heard calling from the thickets. Paths wander through sunny meadows and shaded woods along the riparian corridor, revealing all the usual suspects. Expect to walk a couple of miles here. Keep an eye out for Mississippi Kites, buntings, cardinals and warblers. Other places we will visit include Lakes Holbrook and Cheraw, shallow reservoirs that are terrific for migrating shorebirds and waterfowl. Our targets here are double-digit shorebirds species, including Snowy Plovers. Some walking, 2-3 hours along riparian areas. Cattail marsh: Yellow-headed Blackbirds, rails, Great-tailed Grackle, Common Yellowthroat.

This trip is offered on Friday (full day), Saturday (half day) and Sunday (half day).

Approximately 160 miles round trip.

## **SU4 Migration Hotspots of Lamar – Easy – Half Day**

Peter Gent

6:30 am – 11:00 am

Birding locally at Lamar Community College, local cemeteries and other hotspots. We are looking for passerines that are migrating north to their breeding grounds and the eastern species that stray too far west from the Central Flyway. Anything is possible. Expect walking, standing, listening, and waiting to get on the birds for this field trip.

This trip is offered on Friday (full day), Saturday (half day) and Sunday (half day).

Approximately 15 miles round trip.

### **SU11 East of Lamar – Easy – Half Day**

Kathy Kay & Kieran Schnitzspahn

6:30 am – 12:00 pm

This trip will explore environs east of Lamar. Stops will include places such as Granada, the Amache Japanese-American Internment Camp National Historic Site, the famed migrant trap – Holly Rest Area, and likely a dip over the state line into Kansas. Other stops along US Rt 400 are likely. Target species include migrating warblers, shrikes, orioles and much much more!

Approximately 70-120 miles round trip.

### **SU12 Heartland Ranch Nature Preserve with Southern Plains Land Trust – Moderate – Half Day**

Helen Butts & Johanna Clark

5:30 am – 1:00 pm

This field trip will travel to southern Bent County to visit the Heartland Ranch Nature Preserve. With 47,000 acres available for us to explore, we certainly won't be able to see it all! This protected refuge is home to many prairie bird species from Horned Larks to Burrowing Owls, sparrows, kingbirds, ducks, raptors, and more. Non-bird wildlife includes prairie dogs, badgers, pronghorn, and bison! Southern Plains Land Trust Director, Dr. Henry Pollack, plans to accompany the group, so this is truly an "insiders" tour of this special place.

This trip is offered Saturday (half-day) and Sunday (half-day).

Approximately 75-100 miles round trip.

## **Sunday Full Day Trips**

### **\*\*FULL\*\* SU5 Carrizo Canyon & Comanche National Grasslands – Moderate to Difficult – Full Day**

Peter Burke & Laura Steadman

5:30 am – 4:00 pm

Located in Baca County, this trip will include canyons, grasslands, pinyon/juniper, riparian, and cactus, providing incredibly diverse habitats with a mix of western, eastern and southern species—and great migrant opportunities. Chihuahuan Raven, Curve-billed Thrasher, Bewick's and Canyon Wren, Canyon Towhee, Rufous-crowned Sparrow, Ash-throated Flycatcher, Eastern Phoebe, Ladder-backed Woodpecker, Cassin's Kingbird, may cross paths with Long-billed Curlew, Painted Bunting and any number of exciting migrants including an impressive array of sparrows. Big-horned sheep, elk and mountain lions are also all possible—and not just through their depictions in the petroglyphs. This trip may also stop at Blue Rose Ranch on the way.

This trip is offered on Friday and Sunday.

Approximately 180 miles round trip.

### **SU6 Chase Trip – Moderate – Full Day**

Tyler Stewart & Diana Beatty

5:00 am – 4:00 pm

With so many sharp birders in southeast Colorado, it's a given that we'll find some cool things throughout the conference. The goal of this trip will be to see as many rare and interesting species as possible, based on the previous days' findings. The trip leaders will develop the plan for target areas and species the evening prior, so no guaranteed stops or species on this one.

Revised 24 April 2024

*State Park pass/fee is required for the drivers.*

Expect potentially high vehicle miles.

**SU7 Picture Canyon – Moderate (due to potential heat) – Full Day**

John Drummond & John Haycraft

5:30 am – 4:00 pm

Journey to the southern reaches of the state and back in time as we explore canyon birds and famous rock art at Picture Canyon. Target species include Rock Wren, Scaled Quail, Ladder-backed Woodpecker, Canyon Towhee, Rufous-crowned Sparrow, and Blue Grosbeak. It can get hot down there, so plan to bring plenty of water and shade. Trip leaders may make stops at Two Buttes or other spots along the way to and from the canyon. Vault toilet at the canyon.

This trip is offered on Friday and Sunday.

Approximately 200 miles round trip.

**SU8 Picket Wire Canyonlands – Difficult – Full Day**

Gary Witt & Jenyva Turner

5:45 am – 4:00 pm

Permanent water, pinyon, cholla, saltbush, and cottonwoods create a great habitat for southeast specialties. Likely possibilities include Rock and Bewick's Wrens, Ladder-backed Woodpecker, Cassin's Kingbird, Canyon Wren, Curve-billed Thrasher, Rufous-crowned Sparrow, and, occasionally, Greater Roadrunner. Once the track turns towards the Purgatoire River, summer breeders include Lewis's Woodpecker, Yellow-breasted Chat, Black-throated Sparrow, Golden Eagle, Scaled Quail, Rufous-crowned Sparrow, and Eastern Phoebe. Participants can expect lots of walking, some of which is steep and uneven with limited shade. If time allows, a short side quest to nearby Higbee ought to be possible.

This trip is offered on Friday and Sunday.

Approximately 180 miles round trip.

**SU9 Baca County SWAs- Moderate – Full Day**

Chuck Hundertmark & Paul Slingsby

5:45 am – 4:00 pm

We'll make a loop to Turks Pond, Burchfield, and Two Buttes State Wildlife Areas, located in Baca County east of Highway 385 and containing a variety of habitats. We'll start at Turks Pond and Burchfield SWAs, two smaller areas that offer interesting potential for waterfowl and shorebirds, depending on water level, as well as migrating passerines. We'll aim to arrive at Two Buttes SWA around 11 a.m. Above the dam is the reservoir which is lined with cottonwood and rimrock. Below the dam are tall trees, marshy ponds, and areas of grass. Potential target species are Ash-throated Flycatcher, Black-and-White Warbler, Mountain Plover, Summer Tanager, and Western Screech Owl. High clearance vehicles are recommended due to the nature of the roads, especially if there has been recent rainfall. A vault toilet is at the Two Buttes Lower Dam section. Gobblers Knob Rest Area is about 20 minutes to the northwest.

This trip is offered on Friday (full day), Saturday (half day), and Sunday (full day).

Approximately 165 miles round trip.

## **SU10 Thurston Reservoir, Melody Tempel Grove, and Queens Reservoirs – Moderate – Full Day**

David Wade, Joel Such, Owen Robertson, Kieran Schnitzspahn 5:15 am – 4:00 pm

Melody Tempel Grove, about 20 minutes north of Lamar, has an amazing tree-lined canal that attracts migrants galore. Expected species include Bullock's and Orchard orioles, migrating warblers and thrushes, Olive-sided Flycatcher, and much more. Neenoshe is the largest reservoir of the Great Plains Reservoirs. Located approximately 28 minutes to the northeast of Lamar and east of Highway 287, it is surrounded by short grass prairie. Potential target species are Black Tern, Dunlin, Snowy Plover, Whimbrel, White-rumped Sandpiper, and Burrowing Owls. Two vault toilets are available. There is very little shade.

This trip is offered on Friday and Sunday.

Approximately 48 miles round trip.

## **\*\*FULL\*\* SU13 May Ranch Keynote Speaker Trip – Moderate – Full Day**

Nick Komar & Megan Jones Patterson 5:30 am – 4:00 pm

Discover the 4,500 acres of high sage and sandy creek-bottom country that is both a sustainable conservation ranch and a renowned wildlife habitat. Owners Dallas May, a Colorado Parks & Wildlife commissioner, and his wife Brenda, an appointee to the board of Great Outdoors Colorado, work hard to support beaver dams that turn high plains water trickles into wetlands, which turn grasses into rushes and shade trees and aged cottonwoods good for nesting—even after an April 2022 fire destroyed thousands of acres. Intelligent and integrated ranching continues to bring back healthy foliage and wetlands as well as earning May Ranch the coveted Audubon Society endorsement as a bird-friendly place to raise beef. In addition to beavers and endangered black-footed ferrets, the May Ranch supports western and eastern plains species with a creek that forms ponds and wetlands.

This trip is offered on Friday & Sunday (full day) and Saturday (half day).

Approximately 60 miles round trip.